



新普科技股份有限公司  
 新世電子(常熟)有限公司  
 新普科技(重慶)有限公司  
 華普電子(常熟)有限公司

Control Number: SLEU-1706014

## Lithium-ion Battery UN38.3 Test Report

### Recommendations on the TRANSPORT OF DANGEROUS GOODS

(Manual of Tests and Criteria, Sixth revised edition)

**Customer: Lenovo**

**Model: L17M4P71**

**Rating: 15.36V , 3.516Ah / 54Wh**

Approved By	Checked By	Prepared By
Max Lu		Kenny

SIMPLO TECHNOLOGY CO., LTD.

ADD : No.471, Sec.2, Pa Teh Rd., Hu Kou, Hsin Chu Hsien 303, Taiwan

TEL: +886-3-5695920

FAX: +886-3-5695931



SIMPLO TECHNOLOGY (CHANGSHU) INC.

ADD : No.2 Dong Nan Avenue, Changshu, Jiangsu Province, China

TEL: +86-512-52302255

FAX: +86-512-52302277



SIMPLO TECHNOLOGY (CHONGQING) INC.

ADD : No.2 Zongbao Avenue, Shapingba District, ChongQing, China

TEL: +86-23-61718899

FAX: +86-23-61210488



HUAPU TECHNOLOGY (CHANGSHU) INC.

ADD : No.2 Dong Nan Avenue, Changshu, Jiangsu Province, China

TEL: +86-512-52302255

FAX: +86-512-52302277



Form No. : W11-002-B04

本資料為新普科技股份有限公司之智慧財產權，非經本公司書面授權許可，不得透露或使用本資料，亦不得複印、複製或轉變成其它任何形式使用。  
 The information contained herein is the exclusive property of SIMPLO TECHNOLOGY CO., LTD, and shall not be distributed, reproduced, or disclosed in whole or in part without prior written permission.

本測試報告僅對上述測試項目有效，本報告分離使用無效

Page 1 of 7

This test report is valid only to the items, Invalid for separation using.



### 1. Purpose of the Test :

To test each cell/battery is of the type proved to meet the requirements in United Nations Recommendations on the TRANSPORT OF DANGEROUS GOODS, Manual of Tests and Criteria, Sixth revised edition, Section 38.3.

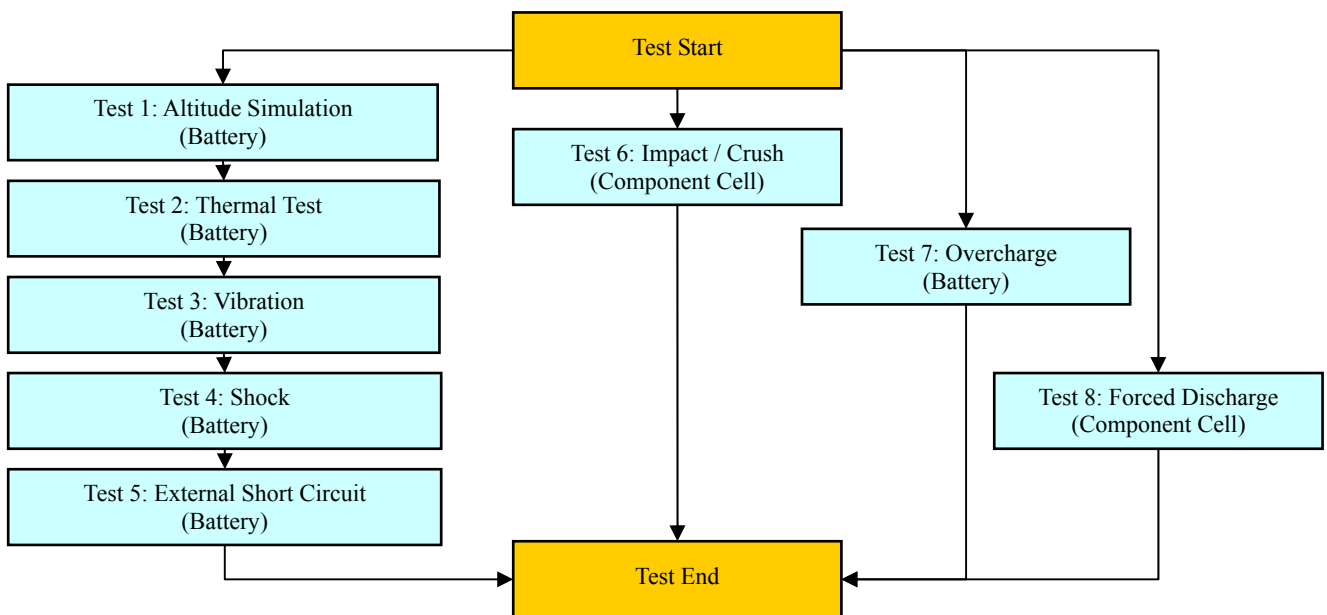
### 2. Test Quantity :

- 2.1 Four batteries, at first cycle, in fully charged states. (For T.1~T.5)
- 2.2 Four batteries, after 50 cycles ending in fully charged states. (For T.1~T.5)
- 2.3 Five component cells, at first cycle at 50% of the design rated capacity. (For T.6)
- 2.4 Four batteries, at first cycle, in fully charged states. (For T.7)
- 2.5 Four batteries, after 50 cycles ending in fully charged states. (For T.7)
- 2.6 Ten component cells, at first cycle in fully discharge states. (For T.8)
- 2.7 Ten component cells, after 50 cycles ending in fully discharged states. (For T.8)

### 3. Test Procedure :

3.1 All detailed test procedures must be based on United Nations Recommendations on the TRANSPORT OF DANGEROUS GOODS, Manual of Tests and Criteria, Sixth revised edition, Section 38.3.

3.2 Test flow shall be followed as below.





#### 4. Test Result :

##### 4.1 T.1 ~T.4 Test result: **Passed**

4.1.1 All batteries could meet the requirement of Table 38.3.1 Mass loss limit ( $M < 1g$ : 0.5% ;  $1g \leq M \leq 75g$ : 0.2% ;  $M > 75g$ : 0.1%) and residual OCV not less than 90% after the test.

4.1.2 No leakage, no venting, no disassembly, no rupture and no fire.

##### 4.2 T.5 Test result: **Passed**

4.2.1 All batteries could meet the requirement, external temperature did not exceed 170°C .

4.2.2 All batteries were no disassembly, no rupture and no fire during the test and within six hours after the test.

##### 4.3 T.6 Test result: **Passed**

4.3.1 All component cells could meet the requirement, external temperature did not exceed 170°C .

4.3.2 All component cells were no disassembly and no fire during the test and within six hours after the test.

##### 4.4 T.7 Test result: **Passed**

4.4.1 All batteries could meet no disassembly and no fire during the test and within seven days after the test.

##### 4.5 T.8 Test result: **Passed**

4.5.1 All component cells could meet the requirement, no disassembly and no fire during the test and within seven days after the test.

#### **Conclusion: The samples had passed the test items of UN38.3.**



新普科技股份有限公司  
 新世電子(常熟)有限公司  
 新普科技(重慶)有限公司  
 華普電子(常熟)有限公司

Control Number: SLEU-1706014

## 5. Test Equipment :

### **SMP** SIMPLO TECHNOLOGY CO., LTD.

Address : No.471, Sec.2, Pa Teh Rd., Hu Kou, Hsin Chu Hsien 303, Taiwan

TEL: +886-3-5695920; FAX: +886-3-5695931

Revised Date: 2017-06-30

Test Instruments Reference List								
Used	Instrument ID	Instrument Name	Type	Range of use	Manufacturer	Calibration Date_Last	Calibration Date_Next	Remarks
<b>Pretest</b>								
V	ML-761	Learning	715C	0~18V 0~8A	SMP	2017/3/1	2018/3/1	
V	ML-762	Learning	715C	0~18V 0~8A	SMP	2017/1/4	2018/1/4	
V	ML-763	Learning	715C	0~18V 0~8A	SMP	2017/3/1	2018/3/1	
V	ML-764	Learning	715C	0~18V 0~8A	SMP	2017/1/4	2018/1/4	
	ML-514	Learning	750R	0~60V 0~60A	SMP	2017/2/6	2018/2/6	
<b>T.1 Altitude Simulation</b>								
V	ML-522	Altitude	SVT-120	Kpa:30~90	HSIN JIANG	2016/7/28	2017/7/28	
V	ML-257	Multimeter	HP 34401A	Note 1	Agilent	2017/3/2	2018/3/2	
V	ML-494	Electronic Balance	XS1220M-SCS	1-1200 gf	CHUANHUA	2016/7/28	2017/7/28	
	TD-166	Electronic Balance	PG603-S	1-610 gf	METTLER TOLEDO	2016/9/21	2017/9/21	
	ML-523	Electronic Balance	MTW-30K	30*0.005Kg		2016/9/21	2017/9/21	
V	ML-550	Data Logger	313	15~35 °C; 30~80 %RH	CENTER	2016/9/21	2017/9/21	
<b>T.2 Thermal Test</b>								
V	ML-789	Thermal Shock	GTST-080-65-AW	T:-40 to 120°C	GF	2017/1/4	2018/1/4	
V	ML-257	Multimeter	HP 34401A	note 1	Agilent	2017/3/2	2018/3/2	
V	ML-494	Electronic Balance	XS1220M-SCS	1-1000 gf	CHUANHUA	2016/7/28	2017/7/28	
	TD-166	Electronic Balance	PG603-S	1-610 gf	METTLER TOLEDO	2016/9/21	2017/9/21	
	ML-523	Electronic Balance	MTW-30K	30*0.005Kg		2016/9/21	2017/9/21	
V	ML-551	Data Logger	313	15~35 °C; 30~80 %RH	CENTER	2016/9/21	2017/9/21	
<b>T.3 Vibration</b>								
V	ML-233	Vibration	KD-9636-EM-300F2K-30N80	F:5~2000Hz G:0.2~20G	King Design	2016/9/2	2017/9/2	
V	ML-257	Multimeter	HP 34401A	note 1	Agilent	2017/3/2	2018/3/2	
V	ML-494	Electronic Balance	XS1220M-SCS	1-1000 gf	CHUANHUA	2016/7/28	2017/7/28	
	TD-166	Electronic Balance	PG603-S	1-610 gf	METTLER TOLEDO	2016/9/21	2017/9/21	
	ML-523	Electronic Balance	MTW-30K	30*0.005Kg		2016/9/21	2017/9/21	
V	ML-552	Data Logger	313	15~35 °C; 30~80 %RH	CENTER	2016/9/21	2017/9/21	
<b>T.4 Shock</b>								
V	ML-056	Shock	DP-1200-25	G:10~600G	King Design	2016/9/2	2017/9/2	
V	ML-257	Multimeter	HP 34401A	note 1	Agilent	2017/3/2	2018/3/2	
V	ML-494	Electronic Balance	XS1220M-SCS	1-1000 gf	CHUANHUA	2016/7/28	2017/7/28	
	TD-166	Electronic Balance	PG603-S	1-610 gf	METTLER TOLEDO	2016/9/21	2017/9/21	
	ML-523	Electronic Balance	MTW-30K	30*0.005Kg		2016/9/21	2017/9/21	
V	ML-551	Data Logger	313	15~35 °C; 30~80 %RH	CENTER	2016/9/21	2017/9/21	
<b>T.5 External Short Circuit</b>								
V	ML-534	mΩ Hitester	3540	1mΩ ~ 30kΩ	HIOKI	2016/9/23	2017/9/23	
V	ML-459	Data Acquisition	MX100-E-1D	1-100 Vdc, -50 to 150°C	Yokogawa	2016/9/21	2017/9/21	
V	ML-460	Data Acquisition	MX100-E-1D	1-100 Vdc, -50 to 150°C	Yokogawa	2016/9/21	2017/9/21	
V	ML-521	Oven	9031	30~80 °C	YEOW LONG	2016/9/21	2017/9/21	
V	ML-549	Data Logger	313	15~35 °C; 30~80 %RH	CENTER	2016/9/21	2017/9/21	
<b>T.6 Impact / Crush</b>								
V	ML-339	Data Acquisition	MX100-E-1D	1-100 Vdc, -50 to 150°C	Yokogawa	2017/5/17	2018/5/17	
	ML-076	Impact Tester			JYI SHENG	2017/1/3	2018/1/3	
	ML-553	Crush Tester	BCT-01		Simplo	2017/5/18	2018/5/18	
V	ML-866	Crush Tester	M0654		JYI SHENG	2017/4/13	2018/4/13	
	ML-459	Data Acquisition	MX100-E-1D	1-100 Vdc, -50 to 150°C	Yokogawa	2016/9/21	2017/9/21	

Form No. : W11-002-B04

本資料為新普科技股份有限公司之智慧財產權，非經本公司書面授權許可，不得透露或使用本資料，亦不得複印、複製或轉變成其它任何形式使用。  
 The information contained herein is the exclusive property of SIMPLO TECHNOLOGY CO., LTD, and shall not be distributed, reproduced, or disclosed in whole or in part without prior written permission.

本測試報告僅對上述測試項目有效，本報告分離使用無效

This test report is valid only to the items, Invalid for separation using.



新普科技股份有限公司  
 新世電子(常熟)有限公司  
 新普科技(重慶)有限公司  
 華普電子(常熟)有限公司

Control Number: SLEU-1706014

**SMP** SIMPLO TECHNOLOGY CO., LTD.

Address : No.471, Sec.2, Pa Teh Rd., Hu Kou, Hsin Chu Hsien 303, Taiwan  
 TEL: +886-3-5695920; FAX: +886-3-5695931

Revised Date: 2017-06-30

Test Instruments Reference List								
Used	Instrument ID	Instrument Name	Type	Range of use	Manufacturer	Calibration Date_Last	Calibration Date_Next	Remarks
	<b>T.7 Overcharge</b>							
	ML-482	Programmable DC Source	DS10014	1-100Vdc, 0.3-14.4A	MOTECH	2017/5/17	2018/5/17	
	ML-483	Programmable DC Source	DS10014	1-100Vdc, 0.3-14.4A	MOTECH	2017/5/17	2018/5/17	
	ML-484	Programmable DC Source	DS10014	1-100Vdc, 0.3-14.4A	MOTECH	2017/5/17	2018/5/17	
	ML-486	Programmable DC Source	DS10014	1-100Vdc, 0.3-14.4A	MOTECH	2017/5/17	2018/5/17	
	ML-487	Programmable DC Source	DS6024	1-60 Vdc, 0.3-24A	MOTECH	2017/5/17	2018/5/17	
	ML-488	Programmable DC Source	DS6024	1-60 Vdc, 0.3-24A	MOTECH	2017/5/17	2018/5/17	
V	ML-549	Data Logger	313	15~35 °C; 30~80 %RH	CENTER	2016/9/21	2017/9/21	
	ML-459	Data Acquisition	MX100-E-1D	1-100 Vdc, -50 to 150°C	Yokogawa	2016/9/21	2017/9/21	
	ML-460	Data Acquisition	MX100-E-1D	1-100 Vdc, -50 to 150°C	Yokogawa	2016/9/21	2017/9/21	
V	ML-918	Overcharge & Forced discharge tester	T901	3~30 Vdc, Charge: 0.05~20A Discharge: 0.02~10A	SMP	2017/5/17	2018/5/17	
	<b>T.8 Forced Discharge</b>							
	ML-132	Electronic Load	3311C	60V,55A, 300W	Prodigit	2017/3/2	2018/3/2	
	ML-133	Electronic Load	3311C	60V,55A, 300W	Prodigit	2017/3/2	2018/3/2	
	ML-136	Electronic Load	3311C	60V,55A, 300W	Prodigit	2017/3/2	2018/3/2	
	ML-192	Electronic Load	3311C	60V,55A, 300W	Prodigit	2017/3/2	2018/3/2	
	ML-269	Electronic Load	3311C	60V,55A, 300W	Prodigit	2017/3/2	2018/3/2	
	ML-532	DC Electronic Load	33511-01	120V, 240A, 3600W	Prodigit	2016/7/29	2017/7/29	
	ML-482	Programmable DC Source	DS10014	1-100Vdc, 0.3-14.4A	MOTECH	2017/5/17	2018/5/17	
	ML-483	Programmable DC Source	DS10014	1-100Vdc, 0.3-14.4A	MOTECH	2017/5/17	2018/5/17	
	ML-484	Programmable DC Source	DS10014	1-100Vdc, 0.3-14.4A	MOTECH	2017/5/17	2018/5/17	
	ML-486	Programmable DC Source	DS10014	1-100Vdc, 0.3-14.4A	MOTECH	2017/5/17	2018/5/17	
	ML-487	Programmable DC Source	DS6024	1-60 Vdc, 0.3-24A	MOTECH	2017/5/17	2018/5/17	
	ML-488	Programmable DC Source	DS6024	1-60 Vdc, 0.3-24A	MOTECH	2017/5/17	2018/5/17	
V	ML-549	Data Logger	313	15~35 °C; 30~80 %RH	CENTER	2016/9/21	2017/9/21	
	ML-459	Data Acquisition	MX100-E-1D	1-100 Vdc, -50 to 150°C	Yokogawa	2016/9/21	2017/9/21	
	ML-460	Data Acquisition	MX100-E-1D	1-100 Vdc, -50 to 150°C	Yokogawa	2016/9/21	2017/9/21	
V	ML-918	Overcharge & Forced discharge tester	T901	3~30 Vdc, Charge: 0.05~20A Discharge: 0.02~10A	SMP	2017/5/17	2018/5/17	
Note 1: DC Voltage: 0.1-1000V; AC Voltage: 0.5-700V at 60Hz, 1kHz; Resistance: 10Ω-10MΩ; DC Current: 0.1mA-3A; AC Current: 0.01-3A at 60Hz, 0.01-1A, at 1kHz.								

Form No. : W11-002-B04

本資料為新普科技股份有限公司之智慧財產權，非經本公司書面授權許可，不得透露或使用本資料，亦不得複印、複製或轉變成其它任何形式使用。  
 The information contained herein is the exclusive property of SIMPLO TECHNOLOGY CO., LTD, and shall not be distributed, reproduced, or disclosed in whole or in part without prior written permission.

本測試報告僅對上述測試項目有效,本報告分離使用無效  
 This test report is valid only to the items, Invalid for separation using.





新普科技股份有限公司  
 新世電子(常熟)有限公司  
 新普科技(重慶)有限公司  
 華普電子(常熟)有限公司

Control Number: SLEU-1706014

## 6. T.1~T.8 Detail Reports:

### UN 38.3 Test Datasheet UN38.3/ST/SG/AC.10/11/Rev.6

Control Number: SLEU-1706014	Customer: Lenovo	Model Name: L17M4P71	SMP Project Name: Raven3
Pack P/N: 931QA081H (A)(B)	Configuration: 4S1P	Test Duration: 2017/06/02~2017/06/30	Reviewer: Esmond

Test Sample Identification:  Large Battery  Small Battery  Single-cell Battery

Battery Pack					Component Cell			
Used	Sample No.	Sample State	Used	Sample No.	Sample State	Used	Sample No.	Sample State
V	01~04	1 Cycle, Fully charged	V	05~08	50 Cycles, Fully charged	V	01C~05C	1 Cycle, 50% SOC
V	09~12	1 Cycle, Fully charged	V	13~16	50 Cycles, Fully charged	V	06C~15C	1 Cycle, Fully discharged (0% SOC)
		25Cycles, Fully charged			25 Cycles, Fully charged	V	16C~25C	50 Cycles, Fully discharged (0% SOC)

#### T.1 Altitude Simulation

Start time: 2017/06/19 08:30		Ambient temp.: 24.0 °C						Operator: Kenny	
Finish time: 2017/06/19 14:50		Sample 01	Sample 02	Sample 03	Sample 04	Sample 05	Sample 06	Sample 07	Sample 08
OCV (V)	Before	17.423	17.426	17.424	17.427	17.431	17.434	17.430	17.433
	After	17.419	17.422	17.419	17.423	17.427	17.429	17.426	17.428
	Residual OCV %	99.98%	99.98%	99.97%	99.98%	99.98%	99.97%	99.98%	99.97%
Mass (g)	Before	220.163	219.749	220.248	219.639	220.375	219.785	220.146	220.427
	After	220.163	219.745	220.246	219.637	220.375	219.782	220.145	220.427
	Mass loss %	0.00%	0.00%	0.00%	0.00%	0.00%	0.00%	0.00%	0.00%
Results		P	P	P	P	P	P	P	P

#### T.2 Thermal Test

Start time: 2017/06/19 15:10		Ambient temp.: 24.8 °C						Operator: Kenny	
Finish time: 2017/06/26 08:40		Sample 01	Sample 02	Sample 03	Sample 04	Sample 05	Sample 06	Sample 07	Sample 08
OCV (V)	Before	17.419	17.422	17.419	17.423	17.427	17.429	17.426	17.428
	After	17.208	17.207	17.201	17.198	17.200	17.206	17.196	17.199
	Residual OCV %	98.79%	98.77%	98.75%	98.71%	98.70%	98.72%	98.68%	98.69%
Mass (g)	Before	220.163	219.745	220.246	219.637	220.375	219.782	220.145	220.427
	After	220.150	219.726	220.224	219.616	220.358	219.767	220.126	220.407
	Mass loss %	0.01%	0.01%	0.01%	0.01%	0.01%	0.01%	0.01%	0.01%
Results		P	P	P	P	P	P	P	P

#### T.3 Vibration

Start time: 2017/06/26 09:00		Ambient temp.: 23.7 °C						Operator: Kenny	
Finish time: 2017/06/27 08:40		Sample 01	Sample 02	Sample 03	Sample 04	Sample 05	Sample 06	Sample 07	Sample 08
OCV (V)	Before	17.208	17.207	17.201	17.198	17.200	17.206	17.196	17.199
	After	17.193	17.190	17.184	17.180	17.183	17.190	17.178	17.181
	Residual OCV %	99.91%	99.90%	99.90%	99.90%	99.90%	99.91%	99.90%	99.90%
Mass (g)	Before	220.150	219.726	220.224	219.616	220.358	219.767	220.126	220.407
	After	220.150	219.726	220.222	219.616	220.356	219.767	220.126	220.407
	Mass loss %	0.00%	0.00%	0.00%	0.00%	0.00%	0.00%	0.00%	0.00%
Results		P	P	P	P	P	P	P	P

#### T.4 Shock

Start time: 2017/06/27 09:00		Ambient temp.: 24.0 °C						Operator: Kenny	
Finish time: 2017/06/27 11:00		Sample 01	Sample 02	Sample 03	Sample 04	Sample 05	Sample 06	Sample 07	Sample 08
OCV (V)	Before	17.193	17.190	17.184	17.180	17.183	17.190	17.178	17.181
	After	17.192	17.189	17.183	17.179	17.182	17.189	17.177	17.180
	Residual OCV %	99.99%	99.99%	99.99%	99.99%	99.99%	99.99%	99.99%	99.99%
Mass (g)	Before	220.150	219.726	220.222	219.616	220.356	219.767	220.126	220.407
	After	220.149	219.726	220.222	219.613	220.356	219.767	220.126	220.404
	Mass loss %	0.00%	0.00%	0.00%	0.00%	0.00%	0.00%	0.00%	0.00%
Results		P	P	P	P	P	P	P	P

Form No. : W11-002-B04

本資料為新普科技股份有限公司之智慧財產權，非經本公司書面授權許可，不得透露或使用本資料，亦不得複印、複製或轉變成其它任何形式使用。  
 The information contained herein is the exclusive property of SIMPLO TECHNOLOGY CO., LTD, and shall not be distributed, reproduced, or disclosed in whole or in part without prior written permission.

本測試報告僅對上述測試項目有效，本報告分離使用無效

This test report is valid only to the items, Invalid for separation using.



新普科技股份有限公司  
 新世電子(常熟)有限公司  
 新普科技(重慶)有限公司  
 華普電子(常熟)有限公司

Control Number: SLEU-1706014

**T.5 External Short Circuit**

Start time: 2017/06/27 11:20		Ambient temp.: 23.7 °C							Operator: Kenny	
Finish time: 2017/06/28 08:30		Sample 01	Sample 02	Sample 03	Sample 04	Sample 05	Sample 06	Sample 07	Sample 08	
OCV (V)	Before	17.192	17.189	17.183	17.179	17.182	17.189	17.177	17.180	
	After	0.000	0.000	0.000	0.000	0.000	0.000	0.000	0.000	
Resistance (<100mΩ)		60.8	57.3	59.4	58.2	58.7	60.1	57.5	59.1	
Max Temp. (< 170°C)		57.4	57.6	57.5	57.6	57.4	57.5	57.7	57.5	
Results		P	P	P	P	P	P	P	P	

**T.6 Impact / Crush (Component Cell)**

UN38.3/ST/SG/AC.10/11/Rev.6

- Impact - Cylindrical cells not less than 18.0 mm in diameter
- Crush - Prismatic, pouch, coin/button cells and cylindrical cells less than 18.0 mm in diameter

Start time: 2017/06/20 09:40		Ambient temp.: 23.7 °C				Operator: Kenny	
Finish time: 2017/06/20 17:00		Sample 01C	Sample 02C	Sample 03C	Sample 04C	Sample 05C	
Initial OCV (V)		3.815	3.811	3.808	3.813	3.811	
Max Temp. (< 170°C)		23.8	24.0	23.9	23.9	23.8	
Results		P	P	P	P	P	

**T.7 Overcharge**

Start time: 2017/06/22 09:20		Ambient temp.: 23.8 °C							Operator: Kenny	
Finish time: 2017/06/30 13:20		Sample 09	Sample 10	Sample 11	Sample 12	Sample 13	Sample 14	Sample 15	Sample 16	
Initial OCV (V)		17.425	17.429	17.422	17.428	17.433	17.432	17.431	17.432	
Results		P	P	P	P	P	P	P	P	

**T.8 Forced Discharge (Component Cell)**

Start time: 2017/06/21 09:40		Ambient temp.: 23.9 °C							Operator: Kenny	
Finish time: 2017/06/28 17:30		Sample 06C	Sample 07C	Sample 08C	Sample 09C	Sample 10C	Sample 11C	Sample 12C	Sample 13C	
Initial OCV (V)		3.362	3.370	3.366	3.369	3.372	3.364	3.368	3.371	
Results		P	P	P	P	P	P	P	P	
Sample No.		Sample 14C	Sample 15C	Sample 16C	Sample 17C	Sample 18C	Sample 19C	Sample 20C	Sample 21C	
Initial OCV (V)		3.367	3.369	3.361	3.358	3.354	3.359	3.360	3.355	
Results		P	P	P	P	P	P	P	P	
Sample No.		Sample 22C	Sample 23C	Sample 24C	Sample 25C					
Initial OCV (V)		3.359	3.353	3.358	3.355					
Results		P	P	P	P					

**7. Test Sample:**



Form No. : W11-002-B04

本資料為新普科技股份有限公司之智慧財產權，非經本公司書面授權許可，不得透露或使用本資料，亦不得複印、複製或轉變成其它任何形式使用。  
 The information contained herein is the exclusive property of SIMPLO TECHNOLOGY CO., LTD, and shall not be distributed, reproduced, or disclosed in whole or in part without prior written permission.

本測試報告僅對上述測試項目有效，本報告分離使用無效  
 This test report is valid only to the items, Invalid for separation using.