



新普科技股份有限公司
 新世電子(常熟)有限公司
 新普科技(重慶)有限公司
 華普電子(常熟)有限公司

Control Number: SLEU-1711005

Lithium-ion Battery UN38.3 Test Report

Recommendations on the TRANSPORT OF DANGEROUS GOODS

(Manual of Tests and Criteria, Sixth revised edition)

Customer: Lenovo

Model: L17M2PF1

**Rating: 7.6V , TYP 4000mAh / 30Wh
 MIN 3880mAh / 29Wh**

Issue date: 2017/12/01

Approved By	Checked By	Prepared By
Max Lu	[Signature]	Kenny

SIMPLO TECHNOLOGY CO., LTD.

ADD : No.471, Sec.2, Pa Teh Rd., Hu Kou, Hsin Chu Hsien 303, Taiwan

TEL: +886-3-5695920

FAX: +886-3-5695931



SIMPLO TECHNOLOGY (CHANGSHU) INC.

ADD : No.2 Dong Nan Avenue, Changshu, Jiangsu Province, China

TEL: +86-512-52302255

FAX: +86-512-52302277



SIMPLO TECHNOLOGY (CHONGQING) INC.

ADD : No.2 Zongbao Avenue, Shapingba District, ChongQing, China

TEL: +86-23-61718899

FAX: +86-23-61210488



HUAPU TECHNOLOGY (CHANGSHU) INC.

ADD : No.2 Dong Nan Avenue, Changshu, Jiangsu Province, China

TEL: +86-512-52302255

FAX: +86-512-52302277



Form No. : W11-002-B04

本資料為新普科技股份有限公司之智慧財產權，非經本公司書面授權許可，不得透露或使用本資料，亦不得複印、複製或轉變成其它任何形式使用。
 The information contained herein is the exclusive property of SIMPLO TECHNOLOGY CO., LTD, and shall not be distributed, reproduced, or disclosed in whole or in part without prior written permission.

本測試報告僅對上述測試項目有效，本報告分離使用無效

Page 1 of 7

This test report is valid only to the items, Invalid for separation using.



1. Purpose of the Test :

To test each cell/battery is of the type proved to meet the requirements in United Nations Recommendations on the TRANSPORT OF DANGEROUS GOODS, Manual of Tests and Criteria, Sixth revised edition, Section 38.3.

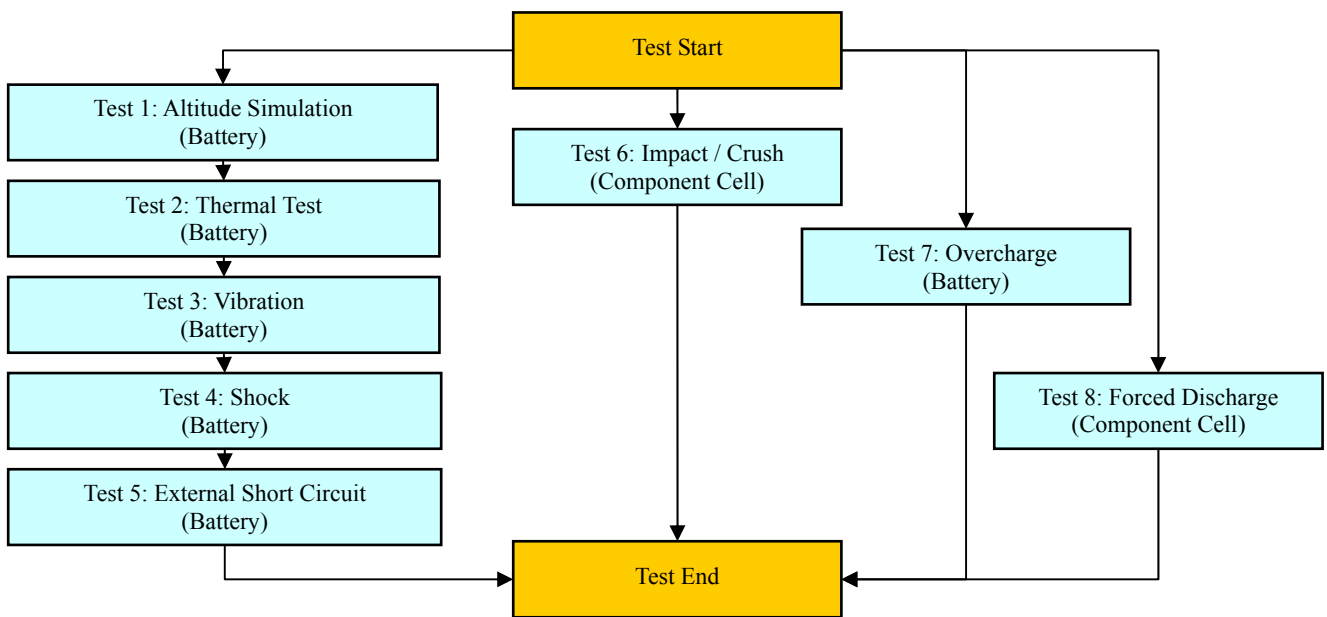
2. Test Quantity :

- 2.1 Four batteries, at first cycle, in fully charged states. (For T.1~T.5)
- 2.2 Four batteries, after 50 cycles ending in fully charged states. (For T.1~T.5)
- 2.3 Five component cells, at first cycle at 50% of the design rated capacity. (For T.6)
- 2.4 Four batteries, at first cycle, in fully charged states. (For T.7)
- 2.5 Four batteries, after 50 cycles ending in fully charged states. (For T.7)
- 2.6 Ten component cells, at first cycle in fully discharge states. (For T.8)
- 2.7 Ten component cells, after 50 cycles ending in fully discharged states. (For T.8)

3. Test Procedure :

3.1 All detailed test procedures must be based on United Nations Recommendations on the TRANSPORT OF DANGEROUS GOODS, Manual of Tests and Criteria, Sixth revised edition, Section 38.3.

3.2 Test flow shall be followed as below.





4. Test Result :

4.1 T.1 ~T.4 Test result: **Passed**

4.1.1 All batteries could meet the requirement of Table 38.3.1 Mass loss limit ($M < 1g$: 0.5% ; $1g \leq M \leq 75g$: 0.2% ; $M > 75g$: 0.1%) and residual OCV not less than 90% after the test.

4.1.2 No leakage, no venting, no disassembly, no rupture and no fire.

4.2 T.5 Test result: **Passed**

4.2.1 All batteries could meet the requirement, external temperature did not exceed 170°C.

4.2.2 All batteries were no disassembly, no rupture and no fire during the test and within six hours after the test.

4.3 T.6 Test result: **Passed**

4.3.1 All component cells could meet the requirement, external temperature did not exceed 170°C.

4.3.2 All component cells were no disassembly and no fire during the test and within six hours after the test.

4.4 T.7 Test result: **Passed**

4.4.1 All batteries could meet no disassembly and no fire during the test and within seven days after the test.

4.5 T.8 Test result: **Passed**

4.5.1 All component cells could meet the requirement, no disassembly and no fire during the test and within seven days after the test.

Conclusion: The samples had passed the test items of UN38.3.



新普科技股份有限公司
 新世電子(常熟)有限公司
 新普科技(重慶)有限公司
 華普電子(常熟)有限公司

Control Number: SLEU-1711005

5. Test Equipment :

SMP SIMPLO TECHNOLOGY CO., LTD.

Address : No.471, Sec.2, Pa Teh Rd., Hu Kou, Hsin Chu Hsien 303, Taiwan

TEL: +886-3-5695920; FAX: +886-3-5695931

Revised Date: 2017-12-01

Test Instruments Reference List								
Used	Instrument ID	Instrument Name	Type	Range of use	Manufacturer	Calibration Date_Last	Calibration Date_Next	Remarks
Pretest								
V	ML-761	Learning	715C	0~18V 0~8A	SMP	2017/3/1	2018/3/1	
V	ML-762	Learning	715C	0~18V 0~8A	SMP	2017/1/4	2018/1/4	
V	ML-763	Learning	715C	0~18V 0~8A	SMP	2017/3/1	2018/3/1	
V	ML-764	Learning	715C	0~18V 0~8A	SMP	2017/1/4	2018/1/4	
	ML-514	Learning	750R	0~60V 0~60A	SMP	2017/2/6	2018/2/6	
T.1 Altitude Simulation								
V	ML-522	Altitude	SVT-120	Kpa:30~90	HSIN JIANG	2017/7/19	2018/7/19	
V	ML-257	Multimeter	HP 34401A	Note 1	Agilent	2017/3/2	2018/3/2	
	ML-494	Electronic Balance	XS1220M-SCS	1-1200 gf	CHUANHUA	2017/7/19	2018/7/19	
V	TD-166	Electronic Balance	PG603-S	1-610 gf	METTLER TOLEDO	2017/9/13	2018/9/13	
	ML-523	Electronic Balance	MTW-30K	30*0.005Kg		2017/9/13	2018/9/13	
V	ML-550	Data Logger	313	15~35 ℃; 30~80 %RH	CENTER	2017/9/18	2018/9/18	
T.2 Thermal Test								
V	ML-789	Thermal Shock	GTST-080-65-AW	T:-40 to 120℃	GF	2017/1/4	2018/1/4	
V	ML-257	Multimeter	HP 34401A	note 1	Agilent	2017/3/2	2018/3/2	
	ML-494	Electronic Balance	XS1220M-SCS	1-1000 gf	CHUANHUA	2017/7/19	2018/7/19	
V	TD-166	Electronic Balance	PG603-S	1-610 gf	METTLER TOLEDO	2017/9/13	2018/9/13	
	ML-523	Electronic Balance	MTW-30K	30*0.005Kg		2017/9/13	2018/9/13	
V	ML-551	Data Logger	313	15~35 ℃; 30~80 %RH	CENTER	2017/9/18	2018/9/18	
T.3 Vibration								
V	ML-233	Vibration	KD-9636-EM-300F2K-30N80	F:5~2000Hz G:0.2~20G	King Design	2017/8/29	2018/8/29	
V	ML-257	Multimeter	HP 34401A	note 1	Agilent	2017/3/2	2018/3/2	
	ML-494	Electronic Balance	XS1220M-SCS	1-1000 gf	CHUANHUA	2017/7/19	2018/7/19	
V	TD-166	Electronic Balance	PG603-S	1-610 gf	METTLER TOLEDO	2017/9/13	2018/9/13	
	ML-523	Electronic Balance	MTW-30K	30*0.005Kg		2017/9/13	2018/9/13	
V	ML-552	Data Logger	313	15~35 ℃; 30~80 %RH	CENTER	2017/9/18	2018/9/18	
T.4 Shock								
V	ML-056	Shock	DP-1200-25	G:10~600G	King Design	2017/8/29	2018/8/29	
V	ML-257	Multimeter	HP 34401A	note 1	Agilent	2017/3/2	2018/3/2	
	ML-494	Electronic Balance	XS1220M-SCS	1-1000 gf	CHUANHUA	2017/7/19	2018/7/19	
V	TD-166	Electronic Balance	PG603-S	1-610 gf	METTLER TOLEDO	2017/9/13	2018/9/13	
	ML-523	Electronic Balance	MTW-30K	30*0.005Kg		2017/9/13	2018/9/13	
V	ML-551	Data Logger	313	15~35 ℃; 30~80 %RH	CENTER	2017/9/18	2018/9/18	
T.5 External Short Circuit								
V	ML-534	mΩ Hitester	3540	1mΩ ~ 30kΩ	HIOKI	2017/9/18	2018/9/18	
V	ML-459	Data Acquisition	MX100-E-1D	1-100 Vdc, -50 to 150℃	Yokogawa	2017/9/13	2018/9/13	
V	ML-460	Data Acquisition	MX100-E-1D	1-100 Vdc, -50 to 150℃	Yokogawa	2017/9/13	2018/9/13	
V	ML-521	Oven	9031	30~80 ℃	YEOW LONG	2017/9/13	2018/9/13	
V	ML-549	Data Logger	313	15~35 ℃; 30~80 %RH	CENTER	2017/9/18	2018/9/18	
T.6 Impact / Crush								
V	ML-339	Data Acquisition	MX100-E-1D	1-100 Vdc, -50 to 150℃	Yokogawa	2017/5/17	2018/5/17	
	ML-076	Impact Tester			JYI SHENG	2017/1/3	2018/1/3	
	ML-553	Crush Tester	BCT-01		Simplo	2017/5/18	2018/5/18	
V	ML-866	Crush Tester	M0654		JYI SHENG	2017/4/13	2018/4/13	
	ML-459	Data Acquisition	MX100-E-1D	1-100 Vdc, -50 to 150℃	Yokogawa	2017/9/13	2018/9/13	

Form No. : W11-002-B04

本資料為新普科技股份有限公司之智慧財產權，非經本公司書面授權許可，不得透露或使用本資料，亦不得複印、複製或轉變成其它任何形式使用。
 The information contained herein is the exclusive property of SIMPLO TECHNOLOGY CO., LTD, and shall not be distributed, reproduced, or disclosed in whole or in part without prior written permission.

本測試報告僅對上述測試項目有效，本報告分離使用無效

This test report is valid only to the items, Invalid for separation using.



新普科技股份有限公司
 新世電子(常熟)有限公司
 新普科技(重慶)有限公司
 華普電子(常熟)有限公司

Control Number: SLEU-1711005

SMP SIMPLO TECHNOLOGY CO., LTD.

Address : No.471, Sec.2, Pa Teh Rd., Hu Kou, Hsin Chu Hsien 303, Taiwan
 TEL: +886-3-5695920; FAX: +886-3-5695931

Revised Date: 2017-12-01

Test Instruments Reference List								
Used	Instrument ID	Instrument Name	Type	Range of use	Manufacturer	Calibration Date_Last	Calibration Date_Next	Remarks
	T.7 Overcharge							
	ML-482	Programmable DC Source	DS10014	1-100Vdc, 0.3-14.4A	MOTECH	2017/5/17	2018/5/17	
	ML-483	Programmable DC Source	DS10014	1-100Vdc, 0.3-14.4A	MOTECH	2017/5/17	2018/5/17	
	ML-484	Programmable DC Source	DS10014	1-100Vdc, 0.3-14.4A	MOTECH	2017/5/17	2018/5/17	
	ML-486	Programmable DC Source	DS10014	1-100Vdc, 0.3-14.4A	MOTECH	2017/5/17	2018/5/17	
	ML-487	Programmable DC Source	DS6024	1-60 Vdc, 0.3-24A	MOTECH	2017/5/17	2018/5/17	
	ML-488	Programmable DC Source	DS6024	1-60 Vdc, 0.3-24A	MOTECH	2017/5/17	2018/5/17	
V	ML-549	Data Logger	313	15~35 ℃; 30~80 %RH	CENTER	2017/9/18	2018/9/18	
	ML-459	Data Acquisition	MX100-E-1D	1-100 Vdc, -50 to 150℃	Yokogawa	2017/9/13	2018/9/13	
	ML-460	Data Acquisition	MX100-E-1D	1-100 Vdc, -50 to 150℃	Yokogawa	2017/9/13	2018/9/13	
V	ML-918	Overcharge & Forced discharge tester	T901	3~30 Vdc, Charge: 0.05~20A Discharge: 0.02~10A	SMP	2017/5/17	2018/5/17	
	T.8 Forced Discharge							
	ML-132	Electronic Load	3311C	60V,55A, 300W	Prodigit	2017/3/2	2018/3/2	
	ML-133	Electronic Load	3311C	60V,55A, 300W	Prodigit	2017/3/2	2018/3/2	
	ML-136	Electronic Load	3311C	60V,55A, 300W	Prodigit	2017/3/2	2018/3/2	
	ML-192	Electronic Load	3311C	60V,55A, 300W	Prodigit	2017/3/2	2018/3/2	
	ML-269	Electronic Load	3311C	60V,55A, 300W	Prodigit	2017/3/2	2018/3/2	
	ML-532	DC Electronic Load	33511-01	120V, 240A, 3600W	Prodigit	2017/7/19	2018/7/19	
	ML-482	Programmable DC Source	DS10014	1-100Vdc, 0.3-14.4A	MOTECH	2017/5/17	2018/5/17	
	ML-483	Programmable DC Source	DS10014	1-100Vdc, 0.3-14.4A	MOTECH	2017/5/17	2018/5/17	
	ML-484	Programmable DC Source	DS10014	1-100Vdc, 0.3-14.4A	MOTECH	2017/5/17	2018/5/17	
	ML-486	Programmable DC Source	DS10014	1-100Vdc, 0.3-14.4A	MOTECH	2017/5/17	2018/5/17	
	ML-487	Programmable DC Source	DS6024	1-60 Vdc, 0.3-24A	MOTECH	2017/5/17	2018/5/17	
	ML-488	Programmable DC Source	DS6024	1-60 Vdc, 0.3-24A	MOTECH	2017/5/17	2018/5/17	
V	ML-549	Data Logger	313	15~35 ℃; 30~80 %RH	CENTER	2017/9/18	2018/9/18	
	ML-459	Data Acquisition	MX100-E-1D	1-100 Vdc, -50 to 150℃	Yokogawa	2017/9/13	2018/9/13	
	ML-460	Data Acquisition	MX100-E-1D	1-100 Vdc, -50 to 150℃	Yokogawa	2017/9/13	2018/9/13	
V	ML-918	Overcharge & Forced discharge tester	T901	3~30 Vdc, Charge: 0.05~20A Discharge: 0.02~10A	SMP	2017/5/17	2018/5/17	
Note 1: DC Voltage: 0.1-1000V; AC Voltage: 0.5-700V at 60Hz, 1kHz; Resistance: 10Ω-10MΩ; DC Current: 0.1mA-3A; AC Current: 0.01-3A at 60Hz, 0.01-1A, at 1kHz.								

Form No. : W11-002-B04

本資料為新普科技股份有限公司之智慧財產權，非經本公司書面授權許可，不得透露或使用本資料，亦不得複印、複製或轉變成其它任何形式使用。
 The information contained herein is the exclusive property of SIMPLO TECHNOLOGY CO., LTD, and shall not be distributed, reproduced, or disclosed in whole or in part without prior written permission.

本測試報告僅對上述測試項目有效,本報告分離使用無效

This test report is valid only to the items, Invalid for separation using.



新普科技股份有限公司
 新世電子(常熟)有限公司
 新普科技(重慶)有限公司
 華普電子(常熟)有限公司

Control Number: SLEU-1711005

6. T.1~T.8 Detail Reports:

UN 38.3 Test Datasheet UN38.3/ST/SG/AC.10/11/Rev.6

Control Number: SLEU-1711005	Customer: Lenovo	Model Name: L17M2PF1	SMP Project Name: 330G-BYD
Pack P/N: 928QA217H (A)(B)	Configuration: 2S1P	Test Duration: 2017/11/02~2017/11/30	Reviewer: Esmond

Test Sample Identification: Large Battery Small Battery Single-cell Battery

Battery Pack					Component Cell			
Used	Sample No.	Sample State	Used	Sample No.	Sample State	Used	Sample No.	Sample State
V	01~04	1 Cycle, Fully charged	V	05~08	50 Cycles, Fully charged	V	01C~05C	1 Cycle, 50% SOC
V	09~12	1 Cycle, Fully charged	V	13~16	50 Cycles, Fully charged	V	06C~15C	1 Cycle, Fully discharged (0% SOC)
		25Cycles, Fully charged			25 Cycles, Fully charged	V	16C~25C	50 Cycles, Fully discharged (0% SOC)

T.1 Altitude Simulation

Start time: 2017/11/17 08:40		Ambient temp.: 22.8 °C						Operator: Kenny	
Finish time: 2017/11/17 15:00		Sample 01	Sample 02	Sample 03	Sample 04	Sample 05	Sample 06	Sample 07	Sample 08
OCV (V)	Before	8.638	8.633	8.634	8.636	8.632	8.636	8.633	8.632
	After	8.631	8.626	8.628	8.629	8.625	8.629	8.625	8.625
	Residual OCV %	99.92%	99.92%	99.93%	99.92%	99.92%	99.92%	99.91%	99.92%
Mass (g)	Before	141.855	141.647	141.742	141.713	141.528	141.624	141.956	141.576
	After	141.853	141.646	141.738	141.710	141.526	141.624	141.956	141.573
	Mass loss %	0.00%	0.00%	0.00%	0.00%	0.00%	0.00%	0.00%	0.00%
Results		P	P	P	P	P	P	P	P

T.2 Thermal Test

Start time: 2017/11/17 15:30		Ambient temp.: 24.0 °C						Operator: Kenny	
Finish time: 2017/11/24 08:40		Sample 01	Sample 02	Sample 03	Sample 04	Sample 05	Sample 06	Sample 07	Sample 08
OCV (V)	Before	8.631	8.626	8.628	8.629	8.625	8.629	8.625	8.625
	After	8.520	8.506	8.513	8.518	8.509	8.507	8.512	8.510
	Residual OCV %	98.71%	98.61%	98.67%	98.71%	98.66%	98.59%	98.69%	98.67%
Mass (g)	Before	141.853	141.646	141.738	141.710	141.526	141.624	141.956	141.573
	After	141.835	141.626	141.720	141.696	141.507	141.603	141.940	141.555
	Mass loss %	0.01%	0.01%	0.01%	0.01%	0.01%	0.01%	0.01%	0.01%
Results		P	P	P	P	P	P	P	P

T.3 Vibration

Start time: 2017/11/24 09:00		Ambient temp.: 22.5 °C						Operator: Kenny	
Finish time: 2017/11/27 08:30		Sample 01	Sample 02	Sample 03	Sample 04	Sample 05	Sample 06	Sample 07	Sample 08
OCV (V)	Before	8.520	8.506	8.513	8.518	8.509	8.507	8.512	8.510
	After	8.504	8.489	8.497	8.502	8.493	8.492	8.496	8.495
	Residual OCV %	99.81%	99.80%	99.81%	99.81%	99.81%	99.82%	99.81%	99.82%
Mass (g)	Before	141.835	141.626	141.720	141.696	141.507	141.603	141.940	141.555
	After	141.829	141.621	141.718	141.689	141.496	141.598	141.933	141.552
	Mass loss %	0.00%	0.00%	0.00%	0.00%	0.01%	0.00%	0.00%	0.00%
Results		P	P	P	P	P	P	P	P

T.4 Shock

Start time: 2017/11/27 08:50		Ambient temp.: 23.2 °C						Operator: Kenny	
Finish time: 2017/11/27 11:00		Sample 01	Sample 02	Sample 03	Sample 04	Sample 05	Sample 06	Sample 07	Sample 08
OCV (V)	Before	8.504	8.489	8.497	8.502	8.493	8.492	8.496	8.495
	After	8.503	8.488	8.496	8.501	8.492	8.491	8.495	8.494
	Residual OCV %	99.99%	99.99%	99.99%	99.99%	99.99%	99.99%	99.99%	99.99%
Mass (g)	Before	141.829	141.621	141.718	141.689	141.496	141.598	141.933	141.552
	After	141.826	141.621	141.716	141.689	141.496	141.594	141.933	141.551
	Mass loss %	0.00%	0.00%	0.00%	0.00%	0.00%	0.00%	0.00%	0.00%
Results		P	P	P	P	P	P	P	P

Form No. : W11-002-B04

本資料為新普科技股份有限公司之智慧財產權，非經本公司書面授權許可，不得透露或使用本資料，亦不得複印、複製或轉變成其它任何形式使用。
 The information contained herein is the exclusive property of SIMPLO TECHNOLOGY CO., LTD, and shall not be distributed, reproduced, or disclosed in whole or in part without prior written permission.

本測試報告僅對上述測試項目有效，本報告分離使用無效

This test report is valid only to the items, Invalid for separation using.



新普科技股份有限公司
 新世電子(常熟)有限公司
 新普科技(重慶)有限公司
 華普電子(常熟)有限公司

Control Number: SLEU-1711005

T.5 External Short Circuit

Start time: 2017/11/27 11:30		Ambient temp.: 22.4 °C						Operator: Kenny	
Finish time: 2017/11/28 08:50		Sample 01	Sample 02	Sample 03	Sample 04	Sample 05	Sample 06	Sample 07	Sample 08
OCV (V)	Before	8.503	8.488	8.496	8.501	8.492	8.491	8.495	8.494
	After	0.000	0.000	0.000	0.000	0.000	0.000	0.000	0.000
Resistance (<100mΩ)		56.7	58.0	61.1	57.8	60.6	60.1	56.4	58.2
Max Temp. (< 170°C)		57.8	57.7	57.6	57.5	57.7	57.7	57.8	57.5
Results		P	P	P	P	P	P	P	P

T.6 Impact / Crush (Component Cell)

UN38.3/ST/SG/AC.10/11/Rev.6

- Impact - Cylindrical cells not less than 18.0 mm in diameter
- Crush - Prismatic, pouch, coin/button cells and cylindrical cells less than 18.0 mm in diameter

Start time: 2017/11/21 09:30		Ambient temp.: 22.5 °C				Operator: Kenny	
Finish time: 2017/11/21 17:30		Sample 01C	Sample 02C	Sample 03C	Sample 04C	Sample 05C	
Initial OCV (V)		3.781	3.775	3.779	3.782	3.777	
Max Temp. (< 170°C)		22.7	22.8	22.6	22.8	22.8	
Results		P	P	P	P	P	

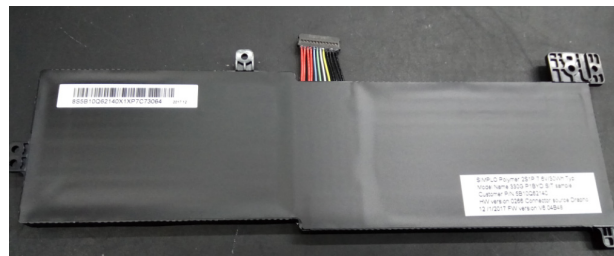
T.7 Overcharge

Start time: 2017/11/22 09:30		Ambient temp.: 22.6 °C						Operator: Kenny	
Finish time: 2017/11/30 08:50		Sample 09	Sample 10	Sample 11	Sample 12	Sample 13	Sample 14	Sample 15	Sample 16
Initial OCV (V)		8.637	8.634	8.633	8.636	8.633	8.637	8.635	8.633
Results		P	P	P	P	P	P	P	P

T.8 Forced Discharge (Component Cell)

Start time: 2017/11/20 09:20		Ambient temp.: 22.5 °C						Operator: Kenny	
Finish time: 2017/11/27 16:30		Sample 06C	Sample 07C	Sample 08C	Sample 09C	Sample 10C	Sample 11C	Sample 12C	Sample 13C
Initial OCV (V)		3.566	3.571	3.568	3.569	3.573	3.564	3.567	3.561
Results		P	P	P	P	P	P	P	P
Sample No.		Sample 14C	Sample 15C	Sample 16C	Sample 17C	Sample 18C	Sample 19C	Sample 20C	Sample 21C
Initial OCV (V)		3.563	3.560	3.562	3.557	3.559	3.562	3.558	3.563
Results		P	P	P	P	P	P	P	P
Sample No.		Sample 22C	Sample 23C	Sample 24C	Sample 25C				
Initial OCV (V)		3.555	3.561	3.563	3.559				
Results		P	P	P	P				

7. Test Sample:



Form No. : W11-002-B04

本資料為新普科技股份有限公司之智慧財產權，非經本公司書面授權許可，不得透露或使用本資料，亦不得複印、複製或轉變成其它任何形式使用。
 The information contained herein is the exclusive property of SIMPLO TECHNOLOGY CO., LTD, and shall not be distributed, reproduced, or disclosed in whole or in part without prior written permission.

本測試報告僅對上述測試項目有效，本報告分離使用無效
 This test report is valid only to the items, Invalid for separation using.