

# ideapad 720S

## PREMIUM PERFORMANCE IN AN ULTRASLIM PACKAGE

The Lenovo™ IdeaPad™ 720S offers feather-light portability with enough processing power to handle everything you do. Available in both 13" and 14" screen sizes, it's significantly thinner and lighter than the already sleek 520S. Featuring more premium metal surfaces, the revolutionary connectivity of Thunderbolt™ 3, additional storage and innovative upgrades like a fingerprint reader, the Lenovo IdeaPad 720S is a stylish powerhouse.

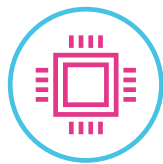
### WHY YOU SHOULD BUY THE LENOVO IDEAPAD 720S



#### Extremely thin & light

The IdeaPad 720S is startlingly sleek. Pop it in your bag, and work or watch anywhere. It'll never weigh you down.

- 13" model: 1.1 kg and 13.6 mm thin
- 14" model: 1.55 kg and 15.9 mm thin



#### Powerful performance

Powered by a 7<sup>th</sup> Generation Intel® Core™ i7 processor, ample PCIe SSD storage, and up to 16 GB memory on the 14" (and 8 GB on the 13" model), you'll be able to multi-task with ease and speed.



Lenovo™



#### Stunning UHD clarity

Enjoy stunning visuals when you stream videos, watch your favorite TV series or browse photos online. Featuring FHD (14") or up to UHD (13") resolution and a redesign that significantly narrows the borders around the screen, the IdeaPad 720S provides the visual quality of a home theater.



#### Immersive sound

Featuring JBL® Premium Audio speakers, the IdeaPad 720S offers Dolby Audio™ for loud, clear audio. Or upgrade to the revolutionary Dolby Atmos®, which creates a breathtaking 360° immersive audio experience, placing you in the middle of the action. (Dolby Atmos® is only available on the 13" model).



[WWW.LENOVO.COM](http://WWW.LENOVO.COM)



# ideapad 720S

## SPECIFICATIONS

Lenovo IdeaPad 720S-13IKB\*, Lenovo IdeaPad 720S Touch-13IKB\*, Lenovo IdeaPad 720S-14IKB\*

### PERFORMANCE

#### Processor

7th Generation Intel® Core™ i7 Processor

#### Operating System

Windows 10 Home

#### Graphics

**720S-13IKB, 720S Touch-13IKB**

Intel® Integrated Graphics

**720S-14IKB**

Intel® Integrated Graphics  
NVIDIA® GeForce® 940MX Graphics

#### Camera & Microphone

0.3M with Single Microphone

HD with Single Microphone

#### Memory

**720S-13IKB, 720S Touch-13IKB**

4 GB DDR4; 8 GB DDR4

**720S-14IKB**

4 GB DDR4; 8 GB DDR4; 16 GB DDR4

#### Storage

**720S-13IKB, 720S Touch-13IKB**

128 GB PCIe SSD; 256 GB PCIe SSD;  
512 GB PCIe SSD; 1 TB PCIe SSD

**720S-14IKB**

128 GB PCIe SSD; 256 GB PCIe SSD;  
512 GB PCIe SSD

#### Audio

**720S-13IKB, 720S Touch-13IKB**

2 x 1.5W JBL® Speakers with Dolby Atmos®

**720S-14IKB**

2 x 1.5W JBL® Speakers with Dolby Audio™

#### Battery<sup>1</sup>

**720S-13IKB, 720S Touch-13IKB**

Up to 8 Hours

**720S-14IKB**

Up to 14 Hours

<sup>1</sup> All battery life claims are approximate and based on test results using the MobileMark® 2014 ver 1.5 battery life benchmark test. Actual results will vary, and depend on numerous factors including product configuration and usage, software, operating conditions, wireless functionality, power management settings, screen brightness and other factors. The maximum capacity of the battery will naturally decrease with time and usage. See <https://bapccom/products/mobilemark-2014/> for additional details.

<sup>2</sup> Optional.

<sup>3</sup> Optional and enabled only for 13.3" FHD configuration.

<sup>4</sup> PRC only.

### DESIGN

#### Display

**720S-13IKB**

13.3" FHD (1920 x 1080) IPS

13.3" UHD (3840 x 2160) IPS

**720S Touch-13IKB**

13.3" FHD (1920 x 1080) IPS Touchscreen

**720S-14IKB**

14" FHD (1920 x 1080) IPS

#### Dimensions (W x D x H)

**720S-13IKB, 720S Touch-13IKB**

(mm) : 305.9 x 213.82 x 13.6

(inches) : 12" x 8.4" x 0.54"

**720S-14IKB**

(mm) : 320.7 x 222.8 x 15.9

(inches) : 12.6" x 8.78" x 0.63"

#### Weight

**720S-13IKB**

Starting at 2.4 lbs (1.1 kg)

**720S Touch-13IKB**

Starting at 2.6 lbs (1.2 kg)

**720S-14IKB**

Starting at 3.4 lbs (1.55 kg)

#### Additional Features

Fingerprint Reader<sup>2</sup>

Touchscreen<sup>3</sup>

Backlit Keyboard

Always-on Charging

#### Tone-on-Tone Color Options

**720S-13IKB, 720S Touch-13IKB**

Champagne Gold

Platinum Silver

Iron Grey

Rose Pink<sup>4</sup>

**720S-14IKB**

Champagne Gold

Platinum Silver

Rose Pink<sup>4</sup>

### CONNECTIVITY

#### WLAN

1 x 1 WiFi 802.11 ac

2 x 2 WiFi 802.11 ac

#### Bluetooth®

Bluetooth® 4.1

#### I/O (Input/Output) Ports

**720S-13IKB, 720S Touch-13IKB**

1 x USB Type-C™

(Thunderbolt™ + DisplayPort™ + PD)

1 x USB Type-C™ (PD + USB 3.0)

2 x USB 3.0

Audio Jack

**720S-14IKB**

1 x USB Type-C™

(Thunderbolt™ + DisplayPort™ + PD)

1 x USB Type-C™ (PD + USB 3.0)

2 x USB 3.0

Audio Jack

HDMI™

4-in-1 Card Reader

### PRELOADED SOFTWARE

- Lenovo App Explorer
- Lenovo Companion 3.0
- Lenovo ID
- Lenovo Settings
- McAfee LiveSafe™ (30-day trial)
- Microsoft Office 365 (30-day trial)



Lenovo™

## LENOVO SERVICES

#### Warranty Extensions<sup>1</sup>

This fixed-term, fixed-cost service helps accurately budget for PC expenses and protect your investment.

#### Warranty Upgrade to Onsite Service Repair<sup>2</sup>

Maximizes PC uptime and productivity by providing Convenient, fast repair service at your place.

#### Accidental Damage Protection<sup>1,2</sup>

Coverage for non-warranted damage incurred under normal operating conditions, such as spills, drops or damage to the integrated screen.

<sup>1</sup> Up to 3 years total duration

<sup>2</sup> May not be available in all countries

<sup>3</sup> Available in Austria, Germany, Ireland, Switzerland and UK

\* Example of Lenovo IdeaPad catalogue naming convention

7 2 0 S - 1 4 I K B

Positioning  
Generation  
Series  
Optional feature SKU

Screen Size  
Platform  
or volume (litre) (e.g. ACL = Carrizo-L)

#### Intel® platform codes

Haswell: IHW, Broadwell: IBD, Skylake: ISK, Kaby Lake: IKB, Cannon Lake: ICN, Braswell: IBR, Cherry Trail: ICR, Apollo Lake: IAP, Gemini Lake: IGM



WWW.LENOVO.COM

Lenovo reserves the right to alter product offerings and specifications at any time, without notice. Lenovo makes every effort to ensure accuracy of all information but is not liable or responsible for any editorial, photographic or typographic errors. All images are for illustration purposes only. For full Lenovo product, service and warranty specifications visit [www.lenovo.com](http://www.lenovo.com). Lenovo makes no representations or warranties regarding third party products or services. **Trademarks:** The following are trademarks or registered trademarks of Lenovo: Lenovo, the Lenovo logo, ideapad, IdeaCentre, yoga and yoga home. Microsoft, Windows and Vista are registered trademarks of Microsoft Corporation. Ultrabook, Celeron, Celeron Inside, Core Inside, Intel, Intel Logo, Intel Atom, Intel Atom Inside, Intel Core, Intel Inside, Intel Inside Logo, Intel vPro, Itanium, Itanium Inside, Pentium, Pentium Inside, vPro Inside, Xeon, Xeon Phi, and Xeon Inside are trademarks of Intel Corporation in the U.S. and/or other countries. Other company, product and service names may be trademarks or service marks of others. Visit [www.lenovo.com/lenovo/us/en/safecom/](http://www.lenovo.com/lenovo/us/en/safecom/) periodically for the latest information on safe and effective computing. ©2017 Lenovo. All rights reserved.



## OPTIONS & ACCESSORIES



Lenovo 510  
Wireless Mouse



Lenovo 500 2.0  
Bluetooth® Speaker



Lenovo 15.6" NAVA  
On-trend Backpack