

ideapad 320

LIFE JUST GOT EASIER.

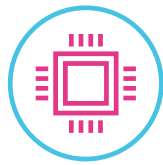
Everything about the Lenovo™ IdeaPad™ 320 is designed to simplify your life. It will handle any task with ease, thanks to powerful processing and discrete graphics options. Preloaded with Windows 10 Home, you'll have the personal assistance of Cortana, designed to help open apps and answer your questions—whether typed or spoken. From the new streamlined design to a cleaner desktop interface, you'll enjoy the simplicity that Lenovo IdeaPad 320 offers. The biggest challenge you'll face is choosing your perfect color.

WHY YOU SHOULD BUY THE LENOVO IDEAPAD 320



Style built to last

Featuring a special protective finish to guard against wear and tear, the IdeaPad 320 will easily withstand whatever life throws your way. Available in a range of sophisticated tone-on-tone colors.



Impressive performance

Powerful 6th Generation Intel® Core™ i7 processing, plus up to 12 GB DDR4 (via memory slot), guarantee lightning-fast responsiveness. Run multiple programs simultaneously, and transition seamlessly between web tabs—you'll be able to multi-task with ease.



Lenovo™



Smooth graphics

The IdeaPad 320 offers a range of graphics options, including a powerful NVIDIA® GeForce® 920MX graphics card. Discrete graphics cards rely on their own processing power, so they don't drain the CPU's output to other functions. Whether you're playing a game, creating, or editing content, you'll enjoy dazzling visuals.



Brilliant FHD resolution

The IdeaPad 320 offers up to Full High-Definition resolution in three screen sizes – 14", 15" and 17". And with anti-glare technology, you'll enjoy true visual clarity when you watch movies, browse the web and more.



WWW.LENOVO.COM



ideapad 320

SPECIFICATIONS

Lenovo IdeaPad 320-14ISK*, Lenovo IdeaPad 320-14IAP*, Lenovo IdeaPad 320-15ISK*,
Lenovo IdeaPad 320-15IAP*, Lenovo IdeaPad 320-17ISK*

PERFORMANCE

Processor

Up to 6th Generation Intel® Core™ i7 Processor

Operating System

Windows 10 Home

Graphics

320-14ISK, 320-15ISK, 320-17ISK

Intel® Integrated Graphics
NVIDIA® GeForce® 920MX Graphics

320-14IAP, 320-15IAP

Intel® Integrated Graphics
AMD Radeon™ 530 Graphics

Camera & Microphone

0.3M with Single Microphone
HD with Single Microphone

Memory

320-14ISK, 320-15ISK, 320-17ISK

4 GB DDR4 On-board,
12 GB Maximum via One Memory Slot

320-14IAP, 320-15IAP

Up to 8 GB DDR3L

Storage

320-14ISK, 320-15ISK, 320-17ISK

Up to 512 GB SATA SSD; or
Up to 2 TB SATA HDD; or
Up to 256 GB SATA SSD + 1 TB SATA HDD

320-14IAP, 320-15IAP

Up to 256 GB SATA SSD; or
Up to 2 TB SATA HDD

Audio

2 x 1.5W Speakers with Dolby Audio™

Battery¹

Up to 6 Hours with premium 35Wh battery

¹ All battery life claims are approximate and based on test results using the MobileMark® 2014 ver 1.5 battery life benchmark test. Actual results will vary, and depend on numerous factors including product configuration and usage, software, operating conditions, wireless functionality, power management settings, screen brightness and other factors. The maximum capacity of the battery will naturally decrease with time and usage. See <https://bapococm.com/products/mobilemark-2014/> for additional details.

² Disable ac for Russia, Ukraine, Indonesia and Egypt.

DESIGN

Display

320-14ISK, 320-14IAP

14" HD (1366 x 768) Anti-Glare
14" FHD (1920 x 1080) Anti-Glare

320-15ISK, 320-15IAP

15.6" HD (1366 x 768) Anti-Glare
15.6" FHD (1920 x 1080) Anti-Glare

320-17ISK

17.3" HD+ (1600 x 900) Anti-Glare
17.3" HD+ (1600 x 900) Glare
17.3" FHD (1920 x 1080) IPS Anti-Glare

Dimensions (W x D x H)

320-14ISK, 320-14IAP

(mm) : 338.3 x 249.9 x 22.7
(inches) : 13.3" x 9.8" x 0.89"

320-15ISK, 320-15IAP

(mm) : 378 x 260 x 22.9
(inches) : 14.9" x 10.2" x 0.9"

320-17ISK

(mm) : 418 x 292.6 x 24.9
(inches) : 16.4" x 11.5" x 0.98"

Weight

320-14ISK, 320-14IAP

Starting at 4.6 lbs (2.1 kg)

320-15ISK, 320-15IAP

Starting at 4.8 lbs (2.2 kg)

320-17ISK

Starting at 6.17 lbs (2.8 kg)

Tone-on-Tone Color Options

320-14ISK, 320-14IAP

Platinum Grey; Onyx Black;
Blizzard White; Denim Blue

320-15ISK, 320-15IAP

Platinum Grey; Onyx Black; Blizzard White;
Denim Blue; Plum Purple; Coral Red

320-17ISK

Platinum Grey; Onyx Black

CONNECTIVITY

WLAN

1 x 1 WiFi 802.11 ac²

Bluetooth®

Bluetooth® 4.1

I/O (Input/Output) Ports

320-14ISK, 320-15ISK, 320-17ISK

1 x USB Type-C™

2 x USB 3.0

4-in-1 Card Reader

HDMI™

RJ45

Audio Jack

320-14IAP, 320-15IAP

1 x USB 2.0

1 x USB 3.0

4-in-1 Card Reader

HDMI™

RJ45

Audio Jack

PRELOADED SOFTWARE

- Lenovo App Explorer
- Lenovo Companion 3.0
- Lenovo ID
- Lenovo Settings
- McAfee LiveSafe™ (30-day trial)
- Microsoft Office 365 (30-day trial)



Lenovo™

LENOVO SERVICES

Warranty Extensions¹

This fixed-term, fixed-cost service helps accurately budget for PC expenses and protect your investment.

Warranty Upgrade to Onsite Service Repair²

Maximizes PC uptime and productivity by providing Convenient, fast repair service at your place.

Accidental Damage Protection^{1,2}

Coverage for non-warranted damage

incurred under normal operating conditions, such as spills, drops or damage to the integrated screen.

Lenovo Services Premium Support³

One-stop solution for non-warranty challenges with network, security and software setup, performance tune-up and more.

¹ Up to 3 years total duration
² May not be available in all countries
³ Available in Austria, Germany, Ireland, Switzerland and UK

* Example of Lenovo IdeaPad catalogue naming convention



Intel® platform codes

Haswell: **IHW**, Broadwell: **IBD**, Broadwell U: **IBU**, Skylake: **ISK**, SkyLake U: **ISU**, KabyLake: **IKB**, Cannonlake: **ICN**, Baytrail: **IBY**, Braswell: **IBR**, Cherrytrail: **ICR**, Apollolake: **IAP**, GeminiLake: **IGM**

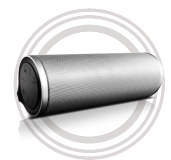
OPTIONS & ACCESSORIES



Lenovo 300
Wireless Compact
Mouse



Lenovo 500
Extra Bass
In-ear Headphones



Lenovo 500 2.0
Bluetooth® Speaker



WWW.LENOVO.COM

Lenovo reserves the right to alter product offerings and specifications at any time, without notice. Lenovo makes every effort to ensure accuracy of all information but is not liable or responsible for any editorial, photographic or typographic errors. All images are for illustration purposes only. For full Lenovo product, service and warranty specifications visit www.lenovo.com. Lenovo makes no representations or warranties regarding third party products or services. **Trademarks:** The following are trademarks or registered trademarks of Lenovo: Lenovo, the Lenovo logo, ideapad, IdeaCentre, yoga and yoga home, Microsoft, Windows and Vista are registered trademarks of Microsoft Corporation. Ultrabook, Celeron, Celeron Inside, Core Inside, Intel, Intel Logo, Intel Atom, Intel Atom Inside, Intel Core, Intel Inside, Intel Inside Logo, Intel vPro, Itanium, Itanium Inside, Pentium, Pentium Inside, vPro Inside, Xeon, Xeon Phi, and Xeon Inside are trademarks of Intel Corporation in the U.S. and/or other countries. Other company, product and service names may be trademarks or service marks of others. Visit www.lenovo.com/lenovo/us/en/safecomp/ periodically for the latest information on safe and effective computing. ©2017 Lenovo. All rights reserved.

