

ideapad 720

PREMIUM PERFORMANCE & STYLE

Stylishly finished in polished aluminum, the Lenovo™ IdeaPad™ 720 combines advanced processing with premium design. Building on the IdeaPad 5 series, this powerful laptop offers faster, larger storage options and high-performance dedicated graphics for the gamer in you. And with razor-thin bezels bordering a vibrant 15" wide-angle display featuring up to FHD resolution, you'll be able to play as hard as you work. Go big.

WHY YOU SHOULD BUY THE LENOVO IDEAPAD 720



Streamlined design and premium details

The IdeaPad 720 features a redesigned chassis with polished metal surfaces and softly angled edges. Treated with the same technology used to shape and smooth diamonds, the result is sleek and streamlined.



Performance to rival a gaming machine

The IdeaPad 720 offers the powerful option of AMD Radeon™ 560 discrete graphics, giving you up to 2.5 times better performance than previous generations. A dedicated graphics card relies on its own processor, so you can play advanced games, render video, edit photos and more—without compromising processor performance or energy usage.



Lenovo™



Everything's vibrant with FHD

The IdeaPad 720 offers up to Full High-Definition clarity, on a display that stretches nearly all the way to each edge. Featuring significantly thinner borders than the IdeaPad 5 series, the 720 will make the absolute most of your entertainment. And with wide-angle IPS viewing, you'll be able to browse and watch from almost any angle. Kick-back on the couch, or gather around for a video chat with family.



Instant login with optional fingerprint reader

Log in to your laptop in less than two seconds with an optional fingerprint reader—that's 3 times faster than the average time it takes to type in a password. It's simple, safe and secure. And thanks to Windows Hello, you'll also be able to sign into partner apps like DropBox with one touch of your finger.



WWW.LENOVO.COM



ideapad 720

SPECIFICATIONS

Lenovo IdeaPad 720-15IKB*

PERFORMANCE

Processor

Up to 7th Generation Intel® Core™ i7 Processor

Operating System

Windows 10 Home

Graphics

AMD Integrated Graphics

AMD Radeon™ RX 550

AMD Radeon™ RX 560

Camera & Microphone

HD Fixed-Focus CMOS Camera with
Combo Microphone

Memory

4 GB DDR4

4 GB Onboard + 2 GB Slot

4 GB Onboard + 4 GB Slot

4 GB Onboard + 8 GB Slot

16 GB Slot

Storage

128 GB PCIe SSD

256 GB PCIe SSD

512 GB PCIe SSD

1 TB SATA HDD

2 TB SATA HDD

128 GB PCIe SSD + 1 TB SATA HDD

256 GB PCIe SSD + 1 TB SATA HDD

16 GB Intel® Optane™ SSD + 1 TB SATA HDD

Audio

2 x Harman® Speakers with Dolby Audio™

Battery¹

Up to 10 Hours

DESIGN

Display

15.6" FHD IPS (1920 x 1080)

15.6" HD TN (1366 x 768)

Dimensions (W x D x H)

(mm) : 362.5 x 255 x 21.7

(inches) : 14.27" x 10.04" x 0.85"

Weight

Starting at 4.6 lbs (2.1 kg)

Additional Features

Fingerprint Reader²

Backlight Keyboard²

Always-On Charging

Tone-on-Tone Color Options

Mineral Grey



CONNECTIVITY

WLAN

1 x 1 WiFi 802.11 ac³

2 x 2 WiFi 802.11 ac³

Bluetooth®

Bluetooth® 4.1

I/O (Input/Output) Ports

2 x USB 3.0

1 x USB 3.0 Type-C™

HDMI™

RJ45

4-in-1 Card Reader

Audio Jack

PRELOADED SOFTWARE

- Lenovo App Explorer
- Lenovo Companion 3.0
- Lenovo ID
- Lenovo Settings
- McAfee LiveSafe™ (30-day trial)
- Microsoft Office 365 (30-day trial)

¹ All battery life claims are approximate and based on test results using the MobileMark® 2014 ver 1.5 battery life benchmark test. Actual results will vary, and depend on numerous factors including product configuration and usage, software, operating conditions, wireless functionality, power management settings, screen brightness and other factors. The maximum capacity of the battery will naturally decrease with time and usage. See <https://bapccom/products/mobilemark-2014/> for additional details.

² Optional.

³ Disable ac for Russia, Ukraine, Indonesia, and Egypt.

Lenovo™

LENOVO SERVICES

Warranty Extensions¹

This fixed-term, fixed-cost service helps accurately budget for PC expenses and protect your investment.

Warranty Upgrade to Onsite Service Repair²

Maximizes PC uptime and productivity by providing Convenient, fast repair service at your place.

Accidental Damage Protection^{1,2}

Coverage for non-warranted damage incurred under normal operating

conditions, such as spills, drops or damage to the integrated screen.

Premium Support³

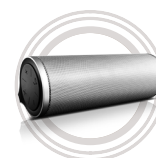
One-stop solution for non-warranty challenges with network, security and software setup, performance tune-up and more.³

¹ Up to 3 years total duration
² May not be available in all countries
³ Available in Austria, Germany, Ireland, Switzerland and UK

OPTIONS & ACCESSORIES



Lenovo 510
Wireless Mouse



Lenovo 500 2.0
Bluetooth® Speaker



Lenovo 15.6" NAVA
On-Trend Backpack

* Example of Lenovo
IdeaPad catalogue
naming convention



Intel® platform codes

Haswell: IHW, Broadwell: IBD, Broadwell U: IBU, Skylake: ISK, Skylake U: ISU, KabyLake: IKB, Cannonlake: ICN, Baytrail: IBY, Braswell: IBR, Cherrytrail: ICR, Apollolake: IAP, GeminiLake: IGM



WWW.LENOVO.COM

Lenovo reserves the right to alter product offerings and specifications at any time, without notice. Lenovo makes every effort to ensure accuracy of all information but is not liable or responsible for any editorial, photographic or typographic errors. All images are for illustration purposes only. For full Lenovo product, service and warranty specifications visit www.lenovo.com. Lenovo makes no representations or warranties regarding third party products or services. **Trademarks:** The following are trademarks or registered trademarks of Lenovo: Lenovo, the Lenovo logo, ideapad, IdeaCentre, yoga and yoga home. Microsoft, Windows and Vista are registered trademarks of Microsoft Corporation. Ultrabook, Celeron, Celeron Inside, Core Inside, Intel, Intel Logo, Intel Atom, Intel Atom Inside, Intel Core, Intel Inside, Intel Inside Logo, Intel vPro, Itanium, Itanium Inside, Pentium, Pentium Inside, vPro Inside, Xeon, Xeon Phi, and Xeon Inside are trademarks of Intel Corporation in the U.S. and/or other countries. Other company, product and service names may be trademarks or service marks of others. Visit www.lenovo.com/lenovo/us/en/safecomp/ periodically for the latest information on safe and effective computing. ©2017 Lenovo. All rights reserved.

