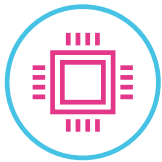


ideapad 120S⁽¹¹⁾ & 120S⁽¹⁴⁾

COMPACT, DURABLE AND POWERFUL.

The Lenovo™ IdeaPad™ 120S is a modern, stylish take on the laptop computer. It's simple, reliable, deceptively powerful, and comes in a great variety of color options. With all that going for it, the Lenovo IdeaPad 120S is a perfect companion for work and for play.

WHY YOU SHOULD BUY THE LENOVO IDEAPAD 120S (11) & 120S (14)



Quality built to last

The IdeaPad 120S features a powerful Intel® processor and up to 8 GB LPDDR4 memory: It handles multitasking with ease. And with up to 1 TB SATA HDD, you'll have more than enough room to build your collection of photos, movies, and files over the years.



Always connected

The last thing you want to worry about is running out of battery. The IdeaPad 120S offers over 8 hours of battery life—that's around 1.15x longer than last generation.

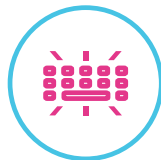


Lenovo™



Stylish design with durable finish

The IdeaPad 120S has been redesigned with simple, clean lines. We applied a protective finish to guard against wear and tear, and included subtle rubber detailing on the bottom cover to maximize ventilation and extend product life. Available in a sophisticated range of colors: Denim Blue, Mineral Grey, Blizzard White and Ballerina Pink.



Ease of use

Featuring curved keys and an ergonomic layout, the keyboard on the IdeaPad 120S is designed with your comfort in mind. A one-piece touchpad also offers instant responsiveness with multifinger gestures. Touch, click and zoom—you'll feel the difference.



WWW.LENOVO.COM



ideapad 120S⁽¹¹⁾ & 120S⁽¹⁴⁾

SPECIFICATIONS

Lenovo IdeaPad 120S-11AP*, Lenovo IdeaPad 120S-14AP*

PERFORMANCE

Processor

Intel® Pentium® N4200 Processor
Intel® Celeron® N3450 Processor
Intel® Celeron® N3350 Processor

Operating System

Windows 10 Home

Graphics

Intel® Integrated Graphics

Camera

0.3M Fixed-Focus CMOS

Memory

2 GB/4 GB/8 GB LPDDR4

Storage

120S-11AP

32 GB/64 GB eMMC or
128 GB/256 GB SATA SSD or
500 GB/1 TB SATA HDD

120S-14AP

32 GB/64 GB eMMC or
128 GB/256 GB SATA SSD

Audio

2 x 1W Speakers

Battery*

8 Hours

DESIGN

Display

120S-11AP

11.6" HD (1366 x 768)
11.6" HD (1366 x 768) IPS

120S-14AP

14" HD (1366 x 768)

Dimensions (W x D x H)

120S-11AP (with HDD)

(mm) : 288 x 200.9 x 20.9
(inches) : 11.34" x 7.91" x 0.82"

120S-11AP (without HDD)

(mm) : 288 x 200.9 x 17.7
(inches) : 11.34" x 7.91" x 0.7"

120S-14AP

(mm) : 334 x 235 x 18.6
(inches) : 13.15" x 9.25" x 0.73"

Weight

120S-11AP (with HDD)

Starting at <2.8 lbs (<1.27 kg)

120S-11AP (without HDD)

Starting at <2.53 lbs (<1.15 kg)

120S-14AP

Starting at 3.17 lbs (1.44 kg)

Keyboard

Redesigned with Bigger Shift Key

Touchpad

One-piece

Color Options

Denim Blue
Mineral Grey
Blizzard White
Ballerina Pink

CONNECTIVITY

WLAN

1 x 1 WiFi 802.11 ac

Bluetooth*

Bluetooth® 4.0

I/O (Input/Output) Ports

2 x USB 3.0

1 x Type-C™ 3.0

HDMI™

microSD™ Card Reader

Always-On Charging

PRELOADED SOFTWARE

- Lenovo App Explorer
- Lenovo Companion 3.0
- Lenovo ID
- Lenovo Settings
- McAfee® LiveSafe™ (30-day trial)
- Microsoft Office 365 (30-day trial)



* All battery life claims are approximate and based on test results using the MobileMark® 2014 ver 1.5 battery life benchmark test. Actual results will vary, and depend on numerous factors including product configuration and usage, software, operating conditions, wireless functionality, power management settings, screen brightness and other factors. The maximum capacity of the battery will naturally decrease with time and usage. See <https://bapccom/products/mobilemark-2014/> for additional details.

LENOVO SERVICES

Warranty Extensions¹

This fixed-term, fixed-cost service helps accurately budget for PC expenses and protect your investment.

Warranty Upgrade to Onsite Service Repair²

Maximizes PC uptime and productivity by providing Convenient, fast repair service at your place.

Accidental Damage Protection^{1,2}

Coverage for non-warranted damage

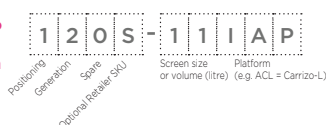
incurred under normal operating conditions, such as spills, drops or damage to the integrated screen.

Lenovo Services Premium Support^{1,5}

One-stop solution for non-warranty challenges with network, security and software setup, performance tune-up and more.³

- 1 Up to 3 years total duration
- 2 May not be available in all countries
- 3 Available in Austria, Germany, Ireland, Switzerland and UK

* Example of Lenovo IdeaPad catalogue naming convention



Intel® platform codes

Haswell: IHW, Broadwell: IBD, Skylake: ISK, Kaby Lake: IKB, Cannon Lake: ICN, Braswell: IBR, Cherry Trail: ICR, Apollo Lake: IAP, Gemini Lake: IGM

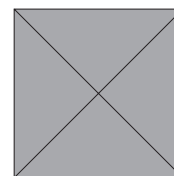
OPTIONS & ACCESSORIES



Lenovo 300 Wireless Compact Mouse



Lenovo 500 Earbud Headphone



Lenovo NAVA 15.6" Classic Toploader



WWW.LENOVO.COM

Lenovo reserves the right to alter product offerings and specifications at any time, without notice. Lenovo makes every effort to ensure accuracy of all information but is not liable or responsible for any editorial, photographic or typographic errors. All images are for illustration purposes only. For full Lenovo product, service and warranty specifications visit www.lenovo.com. Lenovo makes no representations or warranties regarding third party products or services. **Trademarks:** The following are trademarks or registered trademarks of Lenovo: Lenovo, the Lenovo logo, ideapad, IdeaCentre, yoga and yoga home. Microsoft, Windows and Vista are registered trademarks of Microsoft Corporation. Ultrabook, Celeron, Celeron Inside, Core Inside, Intel, Intel Logo, Intel Atom, Intel Atom Inside, Intel Core, Intel Inside, Intel Inside Logo, Intel vPro, Itanium, Itanium Inside, Pentium, Pentium Inside, vPro Inside, Xeon, Xeon Phi, and Xeon Inside are trademarks of Intel Corporation in the U.S. and/or other countries. Other company, product and service names may be trademarks or service marks of others. Visit www.lenovo.com/lenovo/us/en/safecomp/ periodically for the latest information on safe and effective computing. ©2017 Lenovo. All rights reserved.

