

ideapad 720S

ULTRASLIM. ULTRA POWERFUL.

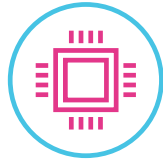
The Lenovo™ IdeaPad™ 720S offers feather-light portability with enough power to handle everything you do. Available in 13", 14" and 15" screen sizes, this elegant powerhouse is finished in premium aluminum, offers top-of-the-line processing, stunning clarity, the 360° sound of Dolby Atmos® and innovative upgrades like an instant fingerprint login. Do more in style.

WHY YOU SHOULD BUY THE LENOVO IDEAPAD 720S



Thin and light

The IdeaPad 720S is startlingly sleek and portable with 13", 14" and 15" screen sizes. Pop it in your bag, and work or watch anywhere.



Dynamic performance

Featuring up to 8th Generation Intel® Core™ i7 processing, the IdeaPad 720S is designed to handle the innovations of the future with ease. The latest generation of Intel® processing represents an enormous leap forward, with up to a 40% boost in application performance from previous generations*. Stream 4K or FHD, login instantly, and start up and run multiple programs with speed and ease.



Lenovo™



Enjoy stunning visuals

Featuring FHD or up to 4K resolution and a redesign that significantly narrows the borders around the screen, the IdeaPad 720S provides the visual quality of a home theater.



Immersive sound

The IdeaPad 720S offers Dolby Atmos®, which creates a breathtaking 360° immersive audio experience when you listen through headphones.



* Software and workloads used in performance tests may have been optimized for performance only on Intel® microprocessors. Performance tests are measured using specific computer systems, components, software, operations and functions. Any change to any of those factors may cause the results to vary.



WWW.LENOVO.COM



ideapad 720S

SPECIFICATIONS

Lenovo IdeaPad 720S-13IKB*, Lenovo IdeaPad 720S-14IKB*, Lenovo IdeaPad 720S-15IKB*

PERFORMANCE

Processor

Up to 8th Generation Intel® Core™ i7 Processor

Operating System

Windows 10 Home

Graphics

720S-13IKB

Intel® Integrated Graphics

720S-14IKB

Up to NVIDIA® GeForce® 1040MX

720S-15IKB

Up to NVIDIA® GeForce® GTX-1050Ti

Camera & Microphone

HD with Single Microphone

Memory

720S-13IKB

4 GB/8 GB DDR4

720S-14IKB

4 GB/8 GB/16 GB DDR4

720S-15IKB

2 x 4 GB DDR4 / 2 x 8 GB DDR4 Dual Channel

Storage

720S-13IKB

128 GB/256 GB/512 GB/1 TB PCIe SSD

720S-14IKB

128 GB/256 GB/512 GB PCIe SSD

720S-15IKB

256 GB/512 GB/1 TB PCIe SSD

Audio

2 x 1.5W JBL® Speakers

Dolby Atmos® via Headphones

Battery¹

720S-13IKB

FHD : 10 Hours

UHD : 8 Hours

720S-14IKB

14 Hours

720S-15IKB

FHD : 12.8 Hours

UHD Touch: 8.8 Hours

DESIGN

Display

720S-13IKB

13.3" FHD (1920 x 1080) IPS;

13.3" UHD (3840 x 2160) IPS;

720S-14IKB

14" FHD (1920 x 1080) IPS

720S-15IKB

15.6" FHD (1920 x 1080) IPS;

Dimensions (W x D x H)

720S-13IKB

(mm) : 305.9 x 213.82 x 13.6

(inches) : 12" x 8.4" x 0.54"

720S-14IKB

(mm) : 320.7 x 222.8 x 15.9

(inches) : 12.6" x 8.78" x 0.63"

720S-15IKB

(mm) : 358.8 x 243.5 x 17.95

(inches) : 14.12" x 9.59" x 0.71"

Weight

720S-13IKB

Starting at 2.5 lbs (1.14 kg)

720S-14IKB

Starting at 3.4 lbs (1.55 kg)

720S-15IKB

Starting at 4.2 lbs (1.9 kg)

Additional Features

Fingerprint Reader²

Touchscreen³

Backlit Keyboard

Cortana with Far Field Microphones⁴

Always-On Charging

Color Options

720S-13IKB

Champagne Gold

Platinum Silver

Iron Grey

720S-14IKB

Champagne Gold

Platinum Silver

720S-15IKB

Platinum Silver

Iron Grey

CONNECTIVITY

WLAN

1 x 1 WiFi 802.11 ac

2 x 2 WiFi 802.11 ac

Bluetooth®

Bluetooth® 4.1

I/O (Input/Output) Ports

720S-13IKB

2 x USB 3.0

1 x USB Type-C™

(Thunderbolt™ + DisplayPort™ + PD)

1 x USB Type-C™ (PD + USB 3.0)

Always-On Charging

720S-14IKB

2 x USB 3.0 Type-A

1 x USB Type-C™ including Thunderbolt™

Always-On Charging

HDMI™

4-in-1 Card Reader (SD, SDXC, SDHC, MMC)

720S-15IKB

2 x USB 3.0 Type-A

1 x USB Type-C™ including Thunderbolt™

Always-On Charging

4in1 Micro Card Reader (supporting SD,

SDXC, SDHC, MMC)

PRELOADED SOFTWARE

- Lenovo App Explorer
- Lenovo Companion 3.0
- Lenovo ID
- Lenovo Settings
- McAfee LiveSafe™ (30-day trial)
- Microsoft Office 365 (30-day trial)

¹ All battery life claims are approximate and based on test results using the MobileMark® 2014 ver 1.5 battery life benchmark test. Actual results will vary, and depend on numerous factors including product configuration and usage, software, operating conditions, wireless functionality, power management settings, screen brightness and other factors. The maximum capacity of the battery will naturally decrease with time and usage. See <https://bapcocom/products/mobilemark-2014/> for additional details.

² Optional.

³ Optional and enabled only for 13.3" & 15.6" models.

⁴ Available only on 13.3" and 15.6" models.

LENOVO SERVICES

Warranty Extensions¹

This fixed-term, fixed-cost service helps accurately budget for PC expenses and protect your investment.

Warranty Upgrade to Onsite Service^{1,2}

Maximizes PC uptime and productivity by providing convenient, fast repair service at your place.

Accidental Damage Protection^{1,2}

Coverage for non-warranted damage incurred under normal operating conditions, such as spills, drops or damage to the integrated screen.

¹ Up to 3 years total duration

² May not be available in all countries

³ Available in Austria, Germany, Ireland, Switzerland and UK

OPTIONS & ACCESSORIES



Lenovo 510
Wireless Mouse



Lenovo 500 2.0
Bluetooth® Speaker



Lenovo 15.6" NAVA
On-Trend Backpack

* Example of Lenovo IdeaPad catalogue naming convention

7 2 0 S - 1 4 I K B

Positioning Generation Series
Optional Feature SKU
Screen size Platform
or volume (litre) (e.g. AQL = Carrito-L)

Intel® platform codes

Apollo Lake: IAP, Broadwell: IBD, Braswell: IBR, Broadwell: IBW, Baytrail: IBY, Cannonlake: ICN, Haswell: IHH, Kabylake: IKB, Skylake H: ISH, Skylake: ISK, Skylake U: ISU, Skylake Y: ISY, Skylake Z: ISZ



WWW.LENOVO.COM

Lenovo reserves the right to alter product offerings and specifications at any time, without notice. Lenovo makes every effort to ensure accuracy of all information but is not liable or responsible for any editorial, photographic or typographic errors. All images are for illustration purposes only. For full Lenovo product, service and warranty specifications visit www.lenovo.com. Lenovo makes no representations or warranties regarding third party products or services. **Trademarks:** The following are trademarks or registered trademarks of Lenovo: Lenovo, the Lenovo logo, ideapad, IdeaCentre, yoga and yoga home. Microsoft, Windows and Vista are registered trademarks of Microsoft Corporation. Ultrabook, Celeron, Celeron Inside, Core Inside, Intel, Intel Logo, Intel Atom, Intel Atom Inside, Intel Core, Intel Inside, Intel Inside Logo, Intel vPro, Itanium, Itanium Inside, Pentium, Pentium Inside, vPro Inside, Xeon, Xeon Phi, and Xeon Inside are trademarks of Intel Corporation in the U.S. and/or other countries. Other company, product and service names may be trademarks or service marks of others. Visit www.lenovo.com/lenovo/us/en/safecomp/ periodically for the latest information on safe and effective computing. ©2017 Lenovo. All rights reserved.



Lenovo™