

# ideapad 720S

## ULTRA SLIM. ULTRA POWERFUL.

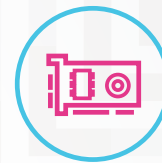
The Lenovo™ IdeaPad™ 720S offers feather-light portability with desktop class processing power to handle everything you do. Featuring a 13" wide-angle display and finished in premium aluminum, this elegant powerhouse offers top-of-the-line AMD processing power, the 360° sound of Dolby Atmos® and innovative upgrades like an instant fingerprint login. Do more in style.

### WHY YOU SHOULD BUY THE LENOVO IDEAPAD 720S



#### Premium style on-the-go

The IdeaPad 720S is startlingly sleek. Pop it in your bag, and work or watch anywhere. At 1.14 kg and 13.6 mm thin, it'll never weigh you down. And with up to 9 hours of battery life, you'll be able to keep moving all day.



#### Get things done with AMD Ryzen™ Mobile Processor

The IdeaPad 720S is designed for the ultimate and efficient computing performance. Combining the latest AMD multi-threaded processing technology with revolutionary Radeon™ Vega architecture-based graphics, the IdeaPad 720S offers blazingly fast performance when you work or play.



#### Dynamic entertainment

Featuring up to FHD wide-angle resolution and the 360° sound of Dolby Atmos® via headphones, the IdeaPad 720S will make the absolute most of your entertainment.



#### Long-range voice assistant

Meet Cortana, your own voice-activated digital assistant who is prepared to answer your questions, open necessary apps, and more. Better yet, the IdeaPad 720S responds to spoken questions from up to 4 meters away.



[WWW.LENOVO.COM](http://WWW.LENOVO.COM)

Lenovo™

# ideapad 720S

## SPECIFICATIONS

Lenovo IdeaPad 720S-13ARR\*

### PERFORMANCE

#### Processor

Up to AMD Ryzen™ 7 2700U Mobile Processor

#### Operating System

Windows 10 Home

#### Graphics

With Radeon™ Vega Mobile Graphics

#### Camera / Array Microphone

HD Fixed-Focus CMOS Camera

#### Memory

4 GB/8 GB DDR4

#### Storage

128 GB/256 GB/512 GB PCIe SSD

#### Audio

JBL® Premium Audio Speakers;  
Dolby Atmos® (via headphones)

#### Battery<sup>1</sup>

Up to 9 Hours

### DESIGN

#### Display

13.3" FHD (1920 x 1080) IPS

#### Dimensions (W x D x H)

(mm) : 305.9 x 213.82 x 13.6

(inches): 12.04" x 8.42" x 0.54"

#### Weight

Starting at 2.5 lbs (1.14 kg)

#### Additional Features

Fingerprint Reader<sup>2</sup>  
Backlit Keyboard  
Always-On Charging  
Cortana with Far-Field Microphones

#### Color Options

Champagne Gold  
Platinum Silver

### CONNECTIVITY

#### WLAN

1 x 1 WiFi 802.11 ac  
2 x 2 WiFi 802.11 ac

#### Bluetooth®

Bluetooth® 4.1

#### I/O (Input/Output) Ports

1 x USB Type-C™ (DisplayPort™ + PD + USB 3.0)  
1 x USB Type-C™ (PD + USB 3.0)  
2 x USB 3.0  
Audio Jack

### PRELOADED SOFTWARE

- Lenovo App Explorer
- Lenovo Companion 3.0
- Lenovo ID
- Lenovo Settings
- McAfee LiveSafe™ (30-day trial)
- Microsoft Office 365 (30-day trial)

<sup>1</sup> All battery life claims are approximate and based on test results using the MobileMark® 2014 ver 1.5 battery life benchmark test. Actual results will vary, and depend on numerous factors including product configuration and usage, software, operating conditions, wireless functionality, power management settings, screen brightness and other factors. The maximum capacity of the battery will naturally decrease with time and usage. See <https://bapccom.com/products/mobilemark-2014/> for additional details.

<sup>2</sup> Optional.



Lenovo™

## OPTIONS & ACCESSORIES



Lenovo 510  
Wireless Mouse



Lenovo 500 2.0  
Bluetooth® Speaker



Lenovo 15.6" NAVA  
On-Trend Backpack

## LENOVO SERVICES

#### Warranty Extensions<sup>1</sup>

This fixed-term, fixed-cost service helps accurately budget for PC expenses and protect your investment.

#### Warranty Upgrade to Onsite Service<sup>2</sup>

Maximizes PC uptime and productivity by providing convenient, fast repair service at your place.

#### Accidental Damage Protection<sup>1,2</sup>

Coverage for non-warranted damage incurred under normal operating

conditions, such as spills, drops or damage to the integrated screen.

#### Premium Support<sup>3</sup>

One-stop solution for non-warranty challenges with network, security and software setup, performance tune-up and more.

<sup>1</sup> Up to 3 years total duration

<sup>2</sup> May not be available in all countries

<sup>3</sup> Available in Austria, Germany, Ireland, Switzerland and UK

\* Example of Lenovo IdeaPad catalogue naming convention



#### AMD platform codes

Bristol Ridge-L: ABL, Beema: ABM, Bristol Ridge: ABR, Carizzo-L: ACL, Carizzo: ACZ, Godavari: AGR, Kaveri: AKV, Stoney Ridge: ASR, Stoney Ridge: AST (NB), Summit Ridge: ASU, Raven Ridge: ARR



WWW.LENOVO.COM



Lenovo reserves the right to alter product offerings and specifications at any time, without notice. Lenovo makes every effort to ensure accuracy of all information but is not liable or responsible for any editorial, photographic or typographic errors. All images are for illustration purposes only. For full Lenovo product, service and warranty specifications visit [www.lenovo.com](http://www.lenovo.com). Lenovo makes no representations or warranties regarding third party products or services. **Trademarks:** The following are trademarks or registered trademarks of Lenovo: Lenovo, the Lenovo logo, ideapad, ideacentre, yoga and yoga home. Microsoft, Windows and Vista are registered trademarks of Microsoft Corporation. Battery life (and recharge times) will vary based on many factors including system settings and usage. Visit [www.lenovo.com/lenovo/us/en/safecom/](http://www.lenovo.com/lenovo/us/en/safecom/) periodically for the latest information on safe and effective computing. ©2017 Lenovo. All rights reserved.

©2017 Advanced Micro Devices, Inc. All rights reserved. AMD, the AMD Arrow logo, AMD Ryzen, Radeon, and combinations thereof are trademarks of Advanced Micro Devices, Inc.