

THE LENOVO® THINKPAD® T440s ULTRABOOK™
GO THE DISTANCE WITH TOUGH DESIGN



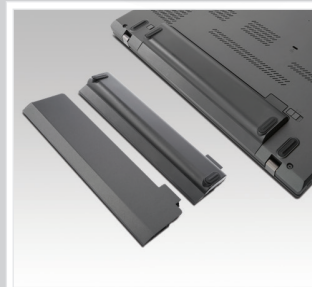
TOUCH AND GO

Full HD display with 10-finger multitouch



DYNAMIC PERFORMER

Packing an Intel® Core™ i processor into a 1.58kg package delivers top performance in a portable device



KEEPS GOING AS LONG AS YOU CAN

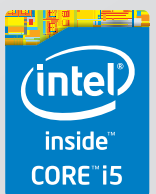
Use the Power Bridge to swap the 3-cell 23.5 Whr battery with another charged battery or the extended 6-cell 72 Whr battery, without having to shut down



CARBON FIBER TOP COVER

Carbon fiber strengthens and protects the system without weighing

The Lenovo® ThinkPad® T440s has been designed to simplify and modernize your computing experience. The carbon fiber top cover makes the Ultrabook™ light, but durable. A wider range of connection options—mini-DisplayPort, VGA, USB and SD card reader—make viewing, sharing and transferring data easier. Rounding out the experience are the latest Intel® Core™ i processors and touch capability with Windows 8.



THE LENOVO® THINKPAD® T440s ULTRABOOK™

GEARED FOR PERFORMANCE

- Faster processing with the 4th gen Intel® Core™ i processors (up to i5)
- Experience a new level of touch-based¹ computing with Windows 8
- 1.34x better performance at lower power level with integrated Intel® HD Graphics 4400
- Meets the Mil-SPEC 8 standard for ruggedness, durability and quality
- USB 3.0 for 10 times faster data transfer than USB 2.0

ENHANCED MEDIA AND COMMUNICATION EXPERIENCE

- Clearer, more lifelike audio with Dolby® Home Theater® v4
- Polycom® Ready provides rich voice clarity and video communication
- Automatic light adjustments make low light picture quality better
- Connect using mini-DisplayPort with audio, VGA, USB 3.0, SD Card Reader, WWAN capable, full-size RJ45, etc.

¹Optional

²Country Specific

WINDOWS 8 SUPPORT AND APPS

- Intelligent 5-button ThinkPad trackpad optimized for Windows 8 gestures Clean and smooth glass surface with easy scroll and zoom functions
- Lenovo® cloud storage powered by SugarSync for automatic data backup and remote access to mobile devices



SOFTWARE

SUPPORTED LSC/LSSB

Advanced Deployment Services Minimize Cost

- Custom image load and creation services
- Asset tagging and laser etching

Business Class Support for Enterprises

- Upgradeable to 5 years onsite
- 24hr local language support centers
- Priority Technical Support upgrades
- International Warranty Service models
- Accidental Damage Protection – now available onsite
- Keep Your Drive



SPECIFICATIONS

PROCESSOR Intel Core i5-4200U + 4GB of RAM Intel Core i5-4210U + 4GB of RAM Intel Core i5-4300 + 4GB of RAM Intel Core i7-4600 + 4GB of RAM	OPERATING SYSTEM Windows 8.1 (64bit) Windows 8.1 Professional (64bit) Windows 7 Professional (64bit) pre-installed via downgrade rights from Windows 8.1 Professional (64bit)	DISPLAY 14" HD+ (1600 x 900) TN 14" FHD (1920 x 1080) IPS 14" FHD Touch (1920 x 1080) IPS
GRAPHICS Intel® HD Graphics 4400	WEBCAM 720p HD face-tracking technology, low light sensitive	MEMORY 4GB Base – Soldered to the board 6GB (4GB Base / 2GB DIMM) 8GB (4GB Base / 4GB DIMM) 12GB (4GB Base / 8GB DIMM)
AUDIO Dolby® Home Theater® v4	DIMENSIONS (W X D X H) 331 mm x 226 mm x 20.6 mm (13.03" x 8.89" x 0.80")	WEIGHT 1.58 kg (3.5 lbs)
KEYBOARD ThinkPad® precision keyboard (with optional backlight)	WIRELESS WWAN 3G Ericsson WWAN, HSPA+ (21Mbps) 4G LTE Sierra EM7345 WWAN WWAN upgradable	FINGERPRINT READER Optional
I/O (INPUT/OUTPUT) PORTS (1) Mini-DisplayPort with audio (1) VGA (1) 3.5 mm Combo Jack Headphone/MIC (3) USB 3.0 (1) 4-in-1 SD Card Reader (SD/SDHC/SDXC/MMC slot) (1) Smart Card Reader ⁴	STORAGE HDD 500GB 5400 / 7200 rpm 500GB / 7200 Opal capable 1TB 5400rpm 500GB/8GB SSHD 500GB/8GB SSHD Opal capable SSD 128GB SSD 180GB Intel SSD OPAL capable 240GB Intel SSD OPAL capable 256GB SSD OPAL2.0 capable 512GB SSD	WIFI Intel 7260 AC (2x2) + BT4.0 Intel 7260 ABGN (2x2) + BT4.0 Intel 7260 BGN (2x2) + BT4.0 ThinkPad WLAN 2x2 BGN + BT4.0
ETHERNET RJ45	OPTICAL DRIVE No	BLUETOOTH® Yes, 4.0 (Included with WiFi Module)
NAVIGATION TrackPoint® and 5-button glass TouchPad	BATTERY Integrated 3-cell 23.5 Whr + Power Bridge 3-cell 23.5 Whr Or Power Bridge 6-cell 72 Whr	BATTERY LIFE Up to 9 hours on Windows 8 Idle Up to 6 hours on full HD playback
THINKLIGHT® No		

³Not available in all regions
⁴Select Models



ACCESSORIES FOR THINKPAD® T440s TOUCH ULTRABOOK™



ThinkPad Battery 68+ (6 cell) (0C52862)



ThinkPad® Ultralight Topload (0B47307) and Backpack (0B47306)



Lenovo® Wireless TouchPad (for Non-touch T440s models) (0A33909)



ThinkPad Pro Dock - 90 W (40A10090xx)

SERVICES OFFERINGS

Lenovo® offers a comprehensive portfolio of services to support and protect your ThinkPad® investment. Succeed with substance and let Lenovo®'s Service support you all the way.

Priority Technical Support³

Makes your priority, our priority. 24x7 priority call routing to advanced-level technicians, electronic incident tracking and escalation management services.

Warranty Upgrades – Onsite and Next Business Day

Maximizes PC uptime and productivity by providing convenient, fast repair service at your place of business.

Warranty Extensions (1-to-5 Years Total Duration) This fixed-term, fixed-cost service helps accurately budget for PC expenses, protect your valuable investment and lower the cost of ownership overtime.

Accidental Damage Protection

Avoid the hassles of unexpected repair costs. Provides coverage for non-warranted damage incurred under normal operating conditions, such as minor spills, drops or damage to the integrated screen.

Keep Your Drive

Retain your drive if it should happen to fail, giving you the peace of mind to know that your valuable data is secure.

Asset Tagging

Systems come equipped with a professional, flexible asset tag based on your exact specifications. PCs are easily identifiable and trackable right out of the box.

³Not available in all regions

RECOMMENDED SERVICES

3YR DEPOT + ACCIDENTAL DAMAGE PROTECTION (5PS0A14089)

3YR ONSITE NEXT BUSINESS DAY + ACCIDENTAL DAMAGE PROTECTION + KEEP YOUR DRIVE (5PS0A14106)

Lenovo
Services™

©2013 Lenovo. All rights reserved.

Availability: Offers, prices, specifications and availability may change without notice. Lenovo is not responsible for photographic or typographic errors. **Warranty:** For a copy of applicable warranties, write to: Warranty Information, 500 Park Offices Drive, RTP, NC, 27709, Attn: Dept. ZPYA/B600. Lenovo makes no representation or warranty regarding third-party products or services. **Trademarks:** Lenovo, the Lenovo logo, Rescue and Recovery, ThinkStation, ThinkVantage and ThinkVision are trademarks or registered trademarks of Lenovo. Microsoft, Windows and Vista are registered trademarks of Microsoft Corporation. Intel, the Intel logo, Intel Core, Core Inside, Xeon and Xeon Inside are registered trademarks of Intel Corporation in the U.S. and other countries. Other company, product and service names may be trademarks or service marks of others. Visit Lenovo.com/safe-computing periodically for the latest information on safe and effective computing.

WW_WW_DS_Q1-14_35768

