



新普科技股份有限公司  
 新世電子(常熟)有限公司  
 新普科技(重慶)有限公司  
 華普電子(常熟)有限公司

Control Number: SLEU-1808005

# Lithium-ion Battery UN38.3 Test Report

## Recommendations on the TRANSPORT OF DANGEROUS GOODS

(Manual of Tests and Criteria, Sixth revised edition)

**Customer: Lenovo**

**Model: L18M3P74**

**Rating: 11.52V , Typical Capacity 4345mAh / 51Wh**

**Rated Capacity 4213mAh / 48Wh**

**Issue date: 2018/08/06**

Approved By	Checked By	Prepared By

SIMPLO TECHNOLOGY CO., LTD.

ADD : No.471, Sec.2, Pa Teh Rd., Hu Kou, Hsin Chu Hsien 303, Taiwan

TEL: +886-3-5695920

FAX: +886-3-5695931



SIMPLO TECHNOLOGY (CHANGSHU) INC.

ADD : No.2 Dong Nan Avenue, Changshu, Jiangsu Province, China

TEL: +86-512-52302255

FAX: +86-512-52302277



SIMPLO TECHNOLOGY (CHONGQING) INC.

ADD : No.2 Zongbao Avenue, Shapingba District, ChongQing, China

TEL: +86-23-61718899

FAX: +86-23-61210488



HUAPU TECHNOLOGY (CHANGSHU) INC.

ADD : No.2 Dong Nan Avenue, Changshu, Jiangsu Province, China

TEL: +86-512-52302255

FAX: +86-512-52302277



Form No. : W11-002-B04

本資料為新普科技股份有限公司之智慧財產權，非經本公司書面授權許可，不得透露或使用本資料，亦不得複印、複製或轉變成其它任何形式使用。  
 The information contained herein is the exclusive property of SIMPLO TECHNOLOGY CO., LTD, and shall not be distributed, reproduced, or disclosed in whole or in part without prior written permission.

本測試報告僅對上述測試項目有效，本報告分離使用無效

Page 1 of 7

This test report is valid only to the items, Invalid for separation using.



### 1. Purpose of the Test :

To test each cell/battery is of the type proved to meet the requirements in United Nations Recommendations on the TRANSPORT OF DANGEROUS GOODS, Manual of Tests and Criteria, Sixth revised edition, Section 38.3.

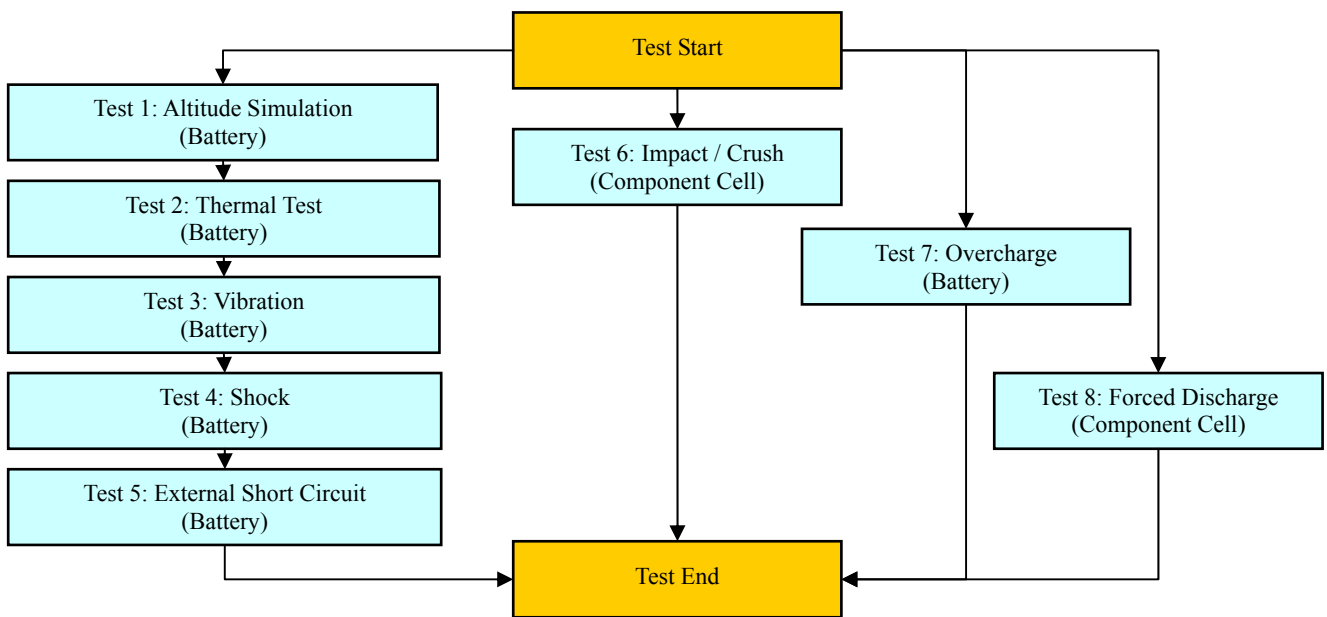
### 2. Test Quantity :

- 2.1 Four batteries, at first cycle, in fully charged states. (For T.1~T.5)
- 2.2 Four batteries, after 50 cycles ending in fully charged states. (For T.1~T.5)
- 2.3 Five component cells, at first cycle at 50% of the design rated capacity. (For T.6)
- 2.4 Four batteries, at first cycle, in fully charged states. (For T.7)
- 2.5 Four batteries, after 50 cycles ending in fully charged states. (For T.7)
- 2.6 Ten component cells, at first cycle in fully discharge states. (For T.8)
- 2.7 Ten component cells, after 50 cycles ending in fully discharged states. (For T.8)

### 3. Test Procedure :

3.1 All detailed test procedures must be based on United Nations Recommendations on the TRANSPORT OF DANGEROUS GOODS, Manual of Tests and Criteria, Sixth revised edition, Section 38.3.

3.2 Test flow shall be followed as below.





#### 4. Test Result :

##### 4.1 T.1 ~T.4 Test result: **Passed**

- 4.1.1 All batteries could meet the requirement of Table 38.3.1 Mass loss limit ( $M < 1g$ : 0.5% ;  $1g \leq M \leq 75g$ : 0.2% ;  $M > 75g$ : 0.1%) and residual OCV not less than 90% after the test.
- 4.1.2 No leakage, no venting, no disassembly, no rupture and no fire.

##### 4.2 T.5 Test result: **Passed**

- 4.2.1 All batteries could meet the requirement, external temperature did not exceed 170°C.
- 4.2.2 All batteries were no disassembly, no rupture and no fire during the test and within six hours after the test.

##### 4.3 T.6 Test result: **Passed**

- 4.3.1 All component cells could meet the requirement, external temperature did not exceed 170°C.
- 4.3.2 All component cells were no disassembly and no fire during the test and within six hours after the test.

##### 4.4 T.7 Test result: **Passed**

- 4.4.1 All batteries could meet no disassembly and no fire during the test and within seven days after the test.

##### 4.5 T.8 Test result: **Passed**

- 4.5.1 All component cells could meet the requirement, no disassembly and no fire during the test and within seven days after the test.

#### **Conclusion: The samples had passed the test items of UN38.3.**



新普科技股份有限公司  
 新世電子(常熟)有限公司  
 新普科技(重慶)有限公司  
 華普電子(常熟)有限公司

Control Number: SLEU-1808005

## 5. Test Equipment :

**SMP** SIMPLO TECHNOLOGY CO., LTD.

Address : No.471, Sec.2, Pa Teh Rd., Hu Kou, Hsin Chu Hsien 303, Taiwan

TEL: +886-3-5695920; FAX: +886-3-5695931

Revised Date: 2018-08-06

Test Instruments Reference List								
Used	Instrument ID	Instrument Name	Type	Range of use	Manufacturer	Calibration Date_Last	Calibration Date_Next	Remarks
<b>Pretest</b>								
V	ML-761	Learning	715C	0~18V 0~8A	SMP	2018/2/26	2019/2/26	
V	ML-762	Learning	715C	0~18V 0~8A	SMP	2018/1/3	2019/1/3	
V	ML-763	Learning	715C	0~18V 0~8A	SMP	2018/2/26	2019/2/26	
V	ML-764	Learning	715C	0~18V 0~8A	SMP	2018/1/3	2019/1/3	
	ML-925	Learning	750C8	0~60V 0~30A	SMP	2018/1/3	2019/1/3	
<b>T.1 Altitude Simulation</b>								
V	ML-522	Altitude	SVT-120	Kpa:30~90	HSIN JIANG	2018/7/18	2019/7/18	
V	ML-257	Multimeter	HP 34401A	Note 1	Agilent	2018/3/1	2019/3/1	
	ML-494	Electronic Balance	XS1220M-SCS	1-1200 gf	CHUANHUA	2018/7/18	2019/7/18	
V	TD-166	Electronic Balance	PG603-S	1-610 gf	METTLER TOLEDO	2017/9/13	2018/9/13	
	ML-523	Electronic Balance	MTW-30K	30*0.005Kg		2017/9/13	2018/9/13	
V	ML-550	Data Logger	313	15~35 ℃; 30~80 %RH	CENTER	2017/9/18	2018/9/18	
<b>T.2 Thermal Test</b>								
V	ML-789	Thermal Shock	GTST-080-65-AW	T:-40 to 120℃	GF	2018/1/3	2019/1/3	
V	ML-257	Multimeter	HP 34401A	note 1	Agilent	2018/3/1	2019/3/1	
	ML-494	Electronic Balance	XS1220M-SCS	1-1000 gf	CHUANHUA	2018/7/18	2019/7/18	
V	TD-166	Electronic Balance	PG603-S	1-610 gf	METTLER TOLEDO	2017/9/13	2018/9/13	
	ML-523	Electronic Balance	MTW-30K	30*0.005Kg		2017/9/13	2018/9/13	
V	ML-551	Data Logger	313	15~35 ℃; 30~80 %RH	CENTER	2017/9/18	2018/9/18	
<b>T.3 Vibration</b>								
V	ML-233	Vibration	KD-9636-EM-300F2K-30N80	F:5~2000Hz G:0.2~20G	King Design	2017/8/29	2018/8/29	
V	ML-257	Multimeter	HP 34401A	note 1	Agilent	2018/3/1	2019/3/1	
	ML-494	Electronic Balance	XS1220M-SCS	1-1000 gf	CHUANHUA	2018/7/18	2019/7/18	
V	TD-166	Electronic Balance	PG603-S	1-610 gf	METTLER TOLEDO	2017/9/13	2018/9/13	
	ML-523	Electronic Balance	MTW-30K	30*0.005Kg		2017/9/13	2018/9/13	
V	ML-552	Data Logger	313	15~35 ℃; 30~80 %RH	CENTER	2017/9/18	2018/9/18	
<b>T.4 Shock</b>								
V	ML-056	Shock	DP-1200-25	G:10~600G	King Design	2017/8/29	2018/8/29	
V	ML-257	Multimeter	HP 34401A	note 1	Agilent	2018/3/1	2019/3/1	
	ML-494	Electronic Balance	XS1220M-SCS	1-1000 gf	CHUANHUA	2018/7/18	2019/7/18	
V	TD-166	Electronic Balance	PG603-S	1-610 gf	METTLER TOLEDO	2017/9/13	2018/9/13	
	ML-523	Electronic Balance	MTW-30K	30*0.005Kg		2017/9/13	2018/9/13	
V	ML-551	Data Logger	313	15~35 ℃; 30~80 %RH	CENTER	2017/9/18	2018/9/18	
<b>T.5 External Short Circuit</b>								
V	ML-534	mΩ Hitester	3540	1mΩ ~ 30kΩ	HIOKI	2017/9/18	2018/9/18	
V	ML-459	Data Acquisition	MX100-E-1D	1-100 Vdc, -50 to 150℃	Yokogawa	2017/9/13	2018/9/13	
V	ML-460	Data Acquisition	MX100-E-1D	1-100 Vdc, -50 to 150℃	Yokogawa	2017/9/13	2018/9/13	
V	ML-521	Oven	9031	30~80 ℃	YEOW LONG	2017/9/13	2018/9/13	
V	ML-549	Data Logger	313	15~35 ℃; 30~80 %RH	CENTER	2017/9/18	2018/9/18	
<b>T.6 Impact / Crush</b>								
V	ML-339	Data Acquisition	MX100-E-1D	1-100 Vdc, -50 to 150℃	Yokogawa	2018/5/17	2019/5/17	
	ML-076	Impact Tester			JYI SHENG	2018/1/3	2019/1/3	
	ML-553	Crush Tester	BCT-01		Simplo	2018/5/16	2019/5/16	
V	ML-866	Crush Tester	M0654		JYI SHENG	2018/4/9	2019/4/9	
	ML-459	Data Acquisition	MX100-E-1D	1-100 Vdc, -50 to 150℃	Yokogawa	2017/9/13	2018/9/13	

Form No. : W11-002-B04

本資料為新普科技股份有限公司之智慧財產權，非經本公司書面授權許可，不得透露或使用本資料，亦不得複印、複製或轉變成其它任何形式使用。  
 The information contained herein is the exclusive property of SIMPLO TECHNOLOGY CO., LTD, and shall not be distributed, reproduced, or disclosed in whole or in part without prior written permission.

本測試報告僅對上述測試項目有效，本報告分離使用無效

Page 4 of 7

This test report is valid only to the items, Invalid for separation using.



新普科技股份有限公司  
 新世電子(常熟)有限公司  
 新普科技(重慶)有限公司  
 華普電子(常熟)有限公司

Control Number: SLEU-1808005

**SMP** SIMPLO TECHNOLOGY CO., LTD.

Address : No.471, Sec.2, Pa Teh Rd., Hu Kou, Hsin Chu Hsien 303, Taiwan  
 TEL: +886-3-5695920; FAX: +886-3-5695931

Revised Date: 2018-08-06

Test Instruments Reference List								
Used	Instrument ID	Instrument Name	Type	Range of use	Manufacturer	Calibration Date_Last	Calibration Date_Next	Remarks
	<b>T.7 Overcharge</b>							
	ML-482	Programmable DC Source	DS10014	1-100Vdc, 0.3-14.4A	MOTECH	2018/5/17	2019/5/17	
	ML-483	Programmable DC Source	DS10014	1-100Vdc, 0.3-14.4A	MOTECH	2018/5/17	2019/5/17	
	ML-484	Programmable DC Source	DS10014	1-100Vdc, 0.3-14.4A	MOTECH	2018/5/17	2019/5/17	
	ML-486	Programmable DC Source	DS10014	1-100Vdc, 0.3-14.4A	MOTECH	2018/5/17	2019/5/17	
	ML-487	Programmable DC Source	DS6024	1-60 Vdc, 0.3-24A	MOTECH	2018/5/17	2019/5/17	
V	ML-549	Data Logger	313	15~35 ℃; 30~80 %RH	CENTER	2017/9/18	2018/9/18	
	ML-459	Data Acquisition	MX100-E-1D	1-100 Vdc, -50 to 150℃	Yokogawa	2017/9/13	2018/9/13	
	ML-460	Data Acquisition	MX100-E-1D	1-100 Vdc, -50 to 150℃	Yokogawa	2017/9/13	2018/9/13	
V	ML-918	Overcharge & Forced discharge tester	T901	3~30 Vdc, Charge: 0.05~20A Discharge: 0.02~10A	SMP	2018/5/17	2019/5/17	
	<b>T.8 Forced Discharge</b>							
	ML-132	Electronic Load	3311C	60V,55A, 300W	Prodigit	2018/3/1	2019/3/1	
	ML-133	Electronic Load	3311C	60V,55A, 300W	Prodigit	2018/3/1	2019/3/1	
	ML-136	Electronic Load	3311C	60V,55A, 300W	Prodigit	2018/3/1	2019/3/1	
	ML-192	Electronic Load	3311C	60V,55A, 300W	Prodigit	2018/3/1	2019/3/1	
	ML-269	Electronic Load	3311C	60V,55A, 300W	Prodigit	2018/3/1	2019/3/1	
	ML-532	DC Electronic Load	33511-01	120V, 240A, 3600W	Prodigit	2018/7/18	2019/7/18	
	ML-482	Programmable DC Source	DS10014	1-100Vdc, 0.3-14.4A	MOTECH	2018/5/17	2019/5/17	
	ML-483	Programmable DC Source	DS10014	1-100Vdc, 0.3-14.4A	MOTECH	2018/5/17	2019/5/17	
	ML-484	Programmable DC Source	DS10014	1-100Vdc, 0.3-14.4A	MOTECH	2018/5/17	2019/5/17	
	ML-486	Programmable DC Source	DS10014	1-100Vdc, 0.3-14.4A	MOTECH	2018/5/17	2019/5/17	
	ML-487	Programmable DC Source	DS6024	1-60 Vdc, 0.3-24A	MOTECH	2018/5/17	2019/5/17	
V	ML-549	Data Logger	313	15~35 ℃; 30~80 %RH	CENTER	2017/9/18	2018/9/18	
	ML-459	Data Acquisition	MX100-E-1D	1-100 Vdc, -50 to 150℃	Yokogawa	2017/9/13	2018/9/13	
	ML-460	Data Acquisition	MX100-E-1D	1-100 Vdc, -50 to 150℃	Yokogawa	2017/9/13	2018/9/13	
V	ML-918	Overcharge & Forced discharge tester	T901	3~30 Vdc, Charge: 0.05~20A Discharge: 0.02~10A	SMP	2018/5/17	2019/5/17	
Note 1: DC Voltage: 0.1-1000V; AC Voltage: 0.5-700V at 60Hz, 1kHz; Resistance: 10Ω-10MΩ; DC Current: 0.1mA-3A; AC Current: 0.01-3A at 60Hz, 0.01-1A, at 1kHz.								

Form No. : W11-002-B04

本資料為新普科技股份有限公司之智慧財產權，非經本公司書面授權許可，不得透露或使用本資料，亦不得複印、複製或轉變成其它任何形式使用。  
 The information contained herein is the exclusive property of SIMPLO TECHNOLOGY CO., LTD, and shall not be distributed, reproduced, or disclosed in whole or in part without prior written permission.

本測試報告僅對上述測試項目有效,本報告分離使用無效  
 This test report is valid only to the items, Invalid for separation using.



新普科技股份有限公司  
 新世電子(常熟)有限公司  
 新普科技(重慶)有限公司  
 華普電子(常熟)有限公司

Control Number: SLEU-1808005

## 6. T.1~T.8 Detail Reports:

### UN 38.3 Test Datasheet UN38.3/ST/SG/AC.10/11/Rev.6

Control Number: SLEU-1808005	Customer: Lenovo	Model Name: L18M3P74	SMP Project Name: Drift
Pack P/N: 931QA109H (A)(B)	Configuration: 3S1P	Test Duration: 2018/07/05~2018/08/03	Reviewer: Esmond

Test Sample Identification:  Large Battery  Small Battery  Single-cell Battery

Battery Pack					Component Cell			
Used	Sample No.	Sample State	Used	Sample No.	Sample State	Used	Sample No.	Sample State
V	01~04	1 Cycle, Fully charged	V	05~08	50 Cycles, Fully charged	V	01C~05C	1 Cycle, 50% SOC
V	09~12	1 Cycle, Fully charged	V	13~16	50 Cycles, Fully charged	V	06C~15C	1 Cycle, Fully discharged (0% SOC)
		25Cycles, Fully charged			25 Cycles, Fully charged	V	16C~25C	50 Cycles, Fully discharged (0% SOC)

#### T.1 Altitude Simulation

Start time: 2018/07/20 08:40		Ambient temp.: 23.5 °C						Operator: Rasner	
Finish time: 2018/07/20 15:00		Sample 01	Sample 02	Sample 03	Sample 04	Sample 05	Sample 06	Sample 07	Sample 08
OCV (V)	Before	13.044	13.039	13.045	13.040	13.038	13.043	13.046	13.041
	After	13.035	13.029	13.035	13.031	13.028	13.033	13.036	13.032
	Residual OCV %	99.93%	99.92%	99.92%	99.93%	99.92%	99.92%	99.92%	99.93%
Mass (g)	Before	198.235	198.416	198.227	198.037	197.992	198.141	198.278	197.889
	After	198.233	198.416	198.226	198.037	197.992	198.141	198.275	197.889
	Mass loss %	0.00%	0.00%	0.00%	0.00%	0.00%	0.00%	0.00%	0.00%
Results		P	P	P	P	P	P	P	P

#### T.2 Thermal Test

Start time: 2018/07/20 15:20		Ambient temp.: 24.7 °C						Operator: Rasner	
Finish time: 2018/07/27 08:40		Sample 01	Sample 02	Sample 03	Sample 04	Sample 05	Sample 06	Sample 07	Sample 08
OCV (V)	Before	13.035	13.029	13.035	13.031	13.028	13.033	13.036	13.032
	After	12.850	12.833	12.847	12.837	12.841	12.846	12.854	12.846
	Residual OCV %	98.58%	98.50%	98.56%	98.51%	98.56%	98.57%	98.60%	98.57%
Mass (g)	Before	198.233	198.416	198.226	198.037	197.992	198.141	198.275	197.889
	After	198.209	198.397	198.202	198.016	197.967	198.121	198.251	197.871
	Mass loss %	0.01%	0.01%	0.01%	0.01%	0.01%	0.01%	0.01%	0.01%
Results		P	P	P	P	P	P	P	P

#### T.3 Vibration

Start time: 2018/07/27 09:00		Ambient temp.: 23.4 °C						Operator: Rasner	
Finish time: 2018/07/30 08:40		Sample 01	Sample 02	Sample 03	Sample 04	Sample 05	Sample 06	Sample 07	Sample 08
OCV (V)	Before	12.850	12.833	12.847	12.837	12.841	12.846	12.854	12.846
	After	12.822	12.805	12.818	12.809	12.813	12.817	12.826	12.819
	Residual OCV %	99.78%	99.78%	99.77%	99.78%	99.78%	99.77%	99.78%	99.79%
Mass (g)	Before	198.209	198.397	198.202	198.016	197.967	198.121	198.251	197.871
	After	198.209	198.394	198.197	198.015	197.967	198.116	198.248	197.870
	Mass loss %	0.00%	0.00%	0.00%	0.00%	0.00%	0.00%	0.00%	0.00%
Results		P	P	P	P	P	P	P	P

#### T.4 Shock

Start time: 2018/07/30 09:00		Ambient temp.: 24.3 °C						Operator: Rasner	
Finish time: 2018/07/30 11:10		Sample 01	Sample 02	Sample 03	Sample 04	Sample 05	Sample 06	Sample 07	Sample 08
OCV (V)	Before	12.822	12.805	12.818	12.809	12.813	12.817	12.826	12.819
	After	12.820	12.804	12.817	12.808	12.812	12.815	12.824	12.818
	Residual OCV %	99.98%	99.99%	99.99%	99.99%	99.99%	99.98%	99.98%	99.99%
Mass (g)	Before	198.209	198.394	198.197	198.015	197.967	198.116	198.248	197.870
	After	198.206	198.394	198.197	198.014	197.967	198.112	198.248	197.869
	Mass loss %	0.00%	0.00%	0.00%	0.00%	0.00%	0.00%	0.00%	0.00%
Results		P	P	P	P	P	P	P	P

Form No. : W11-002-B04

本資料為新普科技股份有限公司之智慧財產權，非經本公司書面授權許可，不得透露或使用本資料，亦不得複印、複製或轉變成其它任何形式使用。  
 The information contained herein is the exclusive property of SIMPLO TECHNOLOGY CO., LTD, and shall not be distributed, reproduced, or disclosed in whole or in part without prior written permission.

本測試報告僅對上述測試項目有效，本報告分離使用無效

This test report is valid only to the items, Invalid for separation using.



新普科技股份有限公司  
 新世電子(常熟)有限公司  
 新普科技(重慶)有限公司  
 華普電子(常熟)有限公司

Control Number: SLEU-1808005

**T.5 External Short Circuit**

Start time: 2018/07/30 11:30		Ambient temp.: 23.7 °C						Operator: Rasner	
Finish time: 2018/07/31 09:00		Sample 01	Sample 02	Sample 03	Sample 04	Sample 05	Sample 06	Sample 07	Sample 08
OCV (V)	Before	12.820	12.804	12.817	12.808	12.812	12.815	12.824	12.818
	After	0.000	0.000	0.000	0.000	0.000	0.000	0.000	0.000
Resistance (<100mΩ)		60.4	58.4	56.9	58.8	61.3	57.4	60.5	58.5
Max Temp. (< 170°C)		58.2	57.9	58.2	58.3	58.0	58.1	58.1	58.3
Results		P	P	P	P	P	P	P	P

**T.6 Impact / Crush (Component Cell)**

UN38.3/ST/SG/AC.10/11/Rev.6

- Impact - Cylindrical cells not less than 18.0 mm in diameter
- Crush - Prismatic, pouch, coin/button cells and cylindrical cells less than 18.0 mm in diameter

Start time: 2018/07/24 09:20		Ambient temp.: 23.7 °C				Operator: Rasner	
Finish time: 2018/07/24 17:20		Sample 01C	Sample 02C	Sample 03C	Sample 04C	Sample 05C	
Initial OCV (V)		3.795	3.801	3.793	3.790	3.799	
Max Temp. (< 170°C)		23.9	23.9	23.7	23.8	23.7	
Results		P	P	P	P	P	

**T.7 Overcharge**

Start time: 2018/07/26 09:20		Ambient temp.: 23.8 °C						Operator: Rasner	
Finish time: 2018/08/03 10:00		Sample 09	Sample 10	Sample 11	Sample 12	Sample 13	Sample 14	Sample 15	Sample 16
Initial OCV (V)		13.042	13.042	13.041	13.043	13.036	13.039	13.044	13.045
Results		P	P	P	P	P	P	P	P

**T.8 Forced Discharge (Component Cell)**

Start time: 2018/07/25 09:50		Ambient temp.: 23.8 °C							Operator: Rasner	
Finish time: 2018/08/02 08:50		Sample 06C	Sample 07C	Sample 08C	Sample 09C	Sample 10C	Sample 11C	Sample 12C	Sample 13C	
Initial OCV (V)		3.451	3.442	3.456	3.433	3.438	3.441	3.458	3.437	
Results		P	P	P	P	P	P	P	P	
Sample No.		Sample 14C	Sample 15C	Sample 16C	Sample 17C	Sample 18C	Sample 19C	Sample 20C	Sample 21C	
Initial OCV (V)		3.446	3.447	3.450	3.452	3.436	3.441	3.447	3.442	
Results		P	P	P	P	P	P	P	P	
Sample No.		Sample 22C	Sample 23C	Sample 24C	Sample 25C					
Initial OCV (V)		3.454	3.450	3.445	3.447					
Results		P	P	P	P					

**7. Test Sample:**



Form No. : W11-002-B04

本資料為新普科技股份有限公司之智慧財產權，非經本公司書面授權許可，不得透露或使用本資料，亦不得複印、複製或轉變成其它任何形式使用。  
 The information contained herein is the exclusive property of SIMPLO TECHNOLOGY CO., LTD, and shall not be distributed, reproduced, or disclosed in whole or in part without prior written permission.

本測試報告僅對上述測試項目有效，本報告分離使用無效  
 This test report is valid only to the items, Invalid for separation using.