



新普科技股份有限公司
 新世電子(常熟)有限公司
 新普科技(重慶)有限公司
 華普電子(常熟)有限公司

Control Number: SLEU-1810001

Lithium-ion Battery UN38.3 Test Report

Recommendations on the TRANSPORT OF DANGEROUS GOODS

(Manual of Tests and Criteria, Sixth revised edition)

Customer: Lenovo

Model: L18M6PD3

Rating: 11.46V, Typical Capacity 4190mAh/ 48Wh

Rated Capacity 4080mAh/ 47Wh

Issue date: 2018/10/05

Approved By	Checked By	Prepared By

SIMPLO TECHNOLOGY CO., LTD.

ADD : No.471, Sec.2, Pa Teh Rd., Hu Kou, Hsin Chu Hsien 303, Taiwan

TEL: +886-3-5695920

FAX: +886-3-5695931



SIMPLO TECHNOLOGY (CHANGSHU) INC.

ADD : No.2 Dong Nan Avenue, Changshu, Jiangsu Province, China

TEL: +86-512-52302255

FAX: +86-512-52302277



SIMPLO TECHNOLOGY (CHONGQING) INC.

ADD : No.2 Zongbao Avenue, Shapingba District, ChongQing, China

TEL: +86-23-61718899

FAX: +86-23-61210488



HUAPU TECHNOLOGY (CHANGSHU) INC.

ADD : No.2 Dong Nan Avenue, Changshu, Jiangsu Province, China

TEL: +86-512-52302255

FAX: +86-512-52302277



Form No. : W11-002-B04

本資料為新普科技股份有限公司之智慧財產權，非經本公司書面授權許可，不得透露或使用本資料，亦不得複印、複製或轉變成其它任何形式使用。
 The information contained herein is the exclusive property of SIMPLO TECHNOLOGY CO., LTD, and shall not be distributed, reproduced, or disclosed in whole or in part without prior written permission.

本測試報告僅對上述測試項目有效，本報告分離使用無效

Page 1 of 7

This test report is valid only to the items, Invalid for separation using.



1. Purpose of the Test :

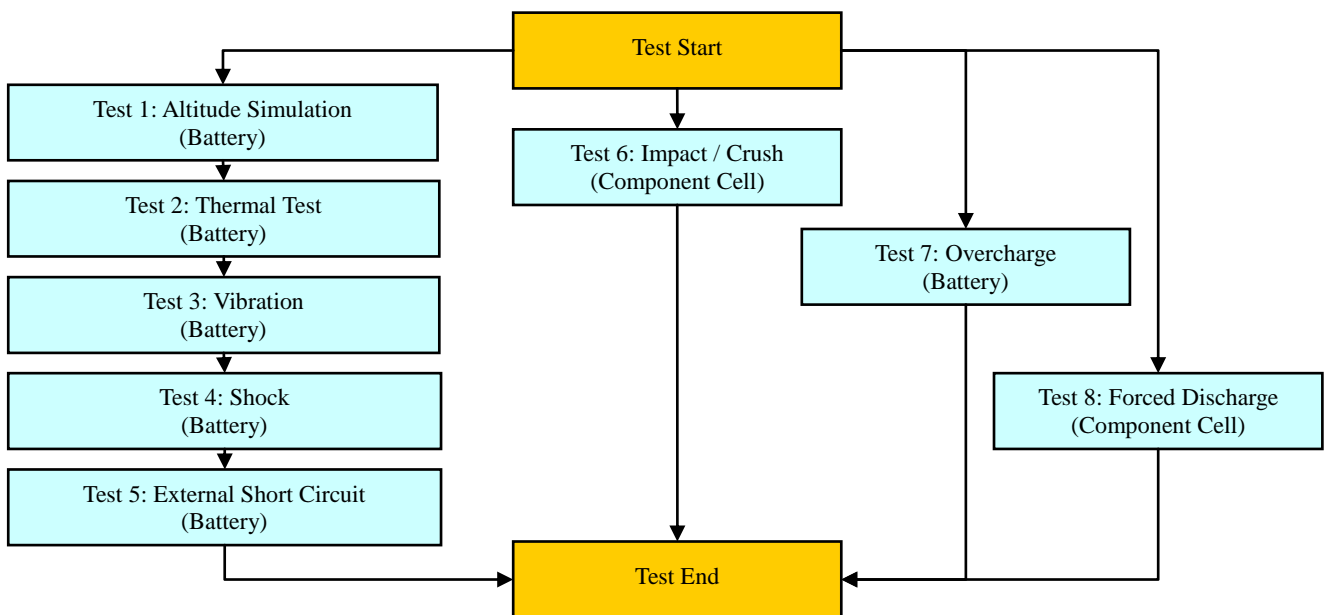
To test each cell/battery is of the type proved to meet the requirements in United Nations Recommendations on the TRANSPORT OF DANGEROUS GOODS, Manual of Tests and Criteria, Sixth revised edition, Section 38.3.

2. Test Quantity :

- 2.1 Four batteries, at first cycle, in fully charged states. (For T.1~T.5)
- 2.2 Four batteries, after 50 cycles ending in fully charged states. (For T.1~T.5)
- 2.3 Five component cells, at first cycle at 50% of the design rated capacity. (For T.6)
- 2.4 Four batteries, at first cycle, in fully charged states. (For T.7)
- 2.5 Four batteries, after 50 cycles ending in fully charged states. (For T.7)
- 2.6 Ten component cells, at first cycle in fully discharge states. (For T.8)
- 2.7 Ten component cells, after 50 cycles ending in fully discharged states. (For T.8)

3. Test Procedure :

- 3.1 All detailed test procedures must be based on United Nations Recommendations on the TRANSPORT OF DANGEROUS GOODS, Manual of Tests and Criteria, Sixth revised edition, Section 38.3.
- 3.2 Test flow shall be followed as below.





4. Test Result :

4.1 T.1 ~T.4 Test result: **Passed**

- 4.1.1 All batteries could meet the requirement of Table 38.3.1 Mass loss limit ($M < 1g$: 0.5% ; $1g \leq M \leq 75g$: 0.2% ; $M > 75g$: 0.1%) and residual OCV not less than 90% after the test.
- 4.1.2 No leakage, no venting, no disassembly, no rupture and no fire.

4.2 T.5 Test result: **Passed**

- 4.2.1 All batteries could meet the requirement, external temperature did not exceed 170°C .
- 4.2.2 All batteries were no disassembly, no rupture and no fire during the test and within six hours after the test.

4.3 T.6 Test result: **Passed**

- 4.3.1 All component cells could meet the requirement, external temperature did not exceed 170°C .
- 4.3.2 All component cells were no disassembly and no fire during the test and within six hours after the test.

4.4 T.7 Test result: **Passed**

- 4.4.1 All batteries could meet no disassembly and no fire during the test and within seven days after the test.

4.5 T.8 Test result: **Passed**

- 4.5.1 All component cells could meet the requirement, no disassembly and no fire during the test and within seven days after the test.

Conclusion: The samples had passed the test items of UN38.3.



新普科技股份有限公司
 新世電子(常熟)有限公司
 新普科技(重慶)有限公司
 華普電子(常熟)有限公司

Control Number: SLEU-1810001

5. Test Equipment :

SMP SIMPLO TECHNOLOGY CO., LTD.

Address : No.471, Sec.2, Pa Teh Rd., Hu Kou, Hsin Chu Hsien 303, Taiwan

TEL: +886-3-5695920; FAX: +886-3-5695931

Revised Date: 2018-10-05

Test Instruments Reference List								
Used	Instrument ID	Instrument Name	Type	Range of use	Manufacturer	Calibration Date_Last	Calibration Date_Next	Remarks
Pretest								
V	ML-761	Learning	715C	0~18V 0~8A	SMP	2018/2/26	2019/2/26	
V	ML-762	Learning	715C	0~18V 0~8A	SMP	2018/1/3	2019/1/3	
V	ML-763	Learning	715C	0~18V 0~8A	SMP	2018/2/26	2019/2/26	
V	ML-764	Learning	715C	0~18V 0~8A	SMP	2018/1/3	2019/1/3	
	ML-925	Learning	750C8	0~60V 0~30A	SMP	2018/1/3	2019/1/3	
T.1 Altitude Simulation								
V	ML-522	Altitude	SVT-120	Kpa:30~90	HSIN JIANG	2018/7/18	2019/7/18	
V	ML-257	Multimeter	HP 34401A	Note 1	Agilent	2018/3/1	2019/3/1	
V	ML-494	Electronic Balance	XS1220M-SCS	1-1220 gf	CHUANHUA	2018/7/18	2019/7/18	
	ML-523	Electronic Balance	MTW-30K	30*0.005Kg		2018/9/12	2019/9/12	
V	ML-550	Data Logger	313	15~35 ℃; 30~80 %RH	CENTER	2018/9/18	2019/9/18	
T.2 Thermal Test								
V	ML-789	Thermal Shock	GTST-080-65-AW	T:-40 to 120℃	GF	2018/1/3	2019/1/3	
V	ML-257	Multimeter	HP 34401A	note 1	Agilent	2018/3/1	2019/3/1	
	ML-494	Electronic Balance	XS1220M-SCS	1-1220 gf	CHUANHUA	2018/7/18	2019/7/18	
	ML-523	Electronic Balance	MTW-30K	30*0.005Kg		2018/9/12	2019/9/12	
V	ML-551	Data Logger	313	15~35 ℃; 30~80 %RH	CENTER	2018/9/18	2019/9/18	
T.3 Vibration								
V	ML-233	Vibration	KD-9636-EM-300F2K-30N80	F:5~2000Hz G:0.2~20G	King Design	2018/8/24	2019/8/24	
V	ML-257	Multimeter	HP 34401A	note 1	Agilent	2018/3/1	2019/3/1	
	ML-494	Electronic Balance	XS1220M-SCS	1-1220 gf	CHUANHUA	2018/7/18	2019/7/18	
	ML-523	Electronic Balance	MTW-30K	30*0.005Kg		2018/9/12	2019/9/12	
V	ML-552	Data Logger	313	15~35 ℃; 30~80 %RH	CENTER	2018/9/18	2019/9/18	
T.4 Shock								
V	ML-056	Shock	DP-1200-25	G:10~600G	King Design	2018/8/24	2019/8/24	
V	ML-257	Multimeter	HP 34401A	note 1	Agilent	2018/3/1	2019/3/1	
	ML-494	Electronic Balance	XS1220M-SCS	1-1220 gf	CHUANHUA	2018/7/18	2019/7/18	
	ML-523	Electronic Balance	MTW-30K	30*0.005Kg		2018/9/12	2019/9/12	
V	ML-551	Data Logger	313	15~35 ℃; 30~80 %RH	CENTER	2018/9/18	2019/9/18	
T.5 External Short Circuit								
V	ML-534	mΩ Hitester	3540	1mΩ ~ 30kΩ	HIOKI	2018/9/18	2019/9/18	
V	ML-459	Data Acquisition	MX100-E-1D	1-100 Vdc, -50 to 150℃	Yokogawa	2018/9/12	2019/9/12	
V	ML-460	Data Acquisition	MX100-E-1D	1-100 Vdc, -50 to 150℃	Yokogawa	2018/9/12	2019/9/12	
V	ML-521	Oven	9031	30~80 ℃	YEOW LONG	2018/9/12	2019/9/12	
V	ML-549	Data Logger	313	15~35 ℃; 30~80 %RH	CENTER	2018/9/18	2019/9/18	
T.6 Impact / Crush								
V	ML-339	Data Acquisition	MX100-E-1D	1-100 Vdc, -50 to 150℃	Yokogawa	2018/5/17	2019/5/17	
	ML-076	Impact Tester			JYI SHENG	2018/1/3	2019/1/3	
	ML-553	Crush Tester	BCT-01		Simplo	2018/5/16	2019/5/16	
V	ML-866	Crush Tester	M0654		JYI SHENG	2018/4/9	2019/4/9	
	ML-459	Data Acquisition	MX100-E-1D	1-100 Vdc, -50 to 150℃	Yokogawa	2018/9/12	2019/9/12	

Form No. : W11-002-B04

本資料為新普科技股份有限公司之智慧財產權，非經本公司書面授權許可，不得透露或使用本資料，亦不得複印、複製或轉變成其它任何形式使用。
 The information contained herein is the exclusive property of SIMPLO TECHNOLOGY CO., LTD, and shall not be distributed, reproduced, or disclosed in whole or in part without prior written permission.

本測試報告僅對上述測試項目有效，本報告分離使用無效

Page 4 of 7

This test report is valid only to the items, Invalid for separation using.



新普科技股份有限公司
 新世電子(常熟)有限公司
 新普科技(重慶)有限公司
 華普電子(常熟)有限公司

Control Number: SLEU-1810001

SMP SIMPLO TECHNOLOGY CO., LTD.

Address : No.471, Sec.2, Pa Teh Rd., Hu Kou, Hsin Chu Hsien 303, Taiwan

TEL: +886-3-5695920; FAX: +886-3-5695931

Revised Date: 2018-10-05

Test Instruments Reference List								
Used	Instrument ID	Instrument Name	Type	Range of use	Manufacturer	Calibration Date_Last	Calibration Date_Next	Remarks
T.7 Overcharge								
	ML-482	Programmable DC Source	DS10014	1-100Vdc, 0.3-14.4A	MOTECH	2018/5/17	2019/5/17	
	ML-483	Programmable DC Source	DS10014	1-100Vdc, 0.3-14.4A	MOTECH	2018/5/17	2019/5/17	
	ML-484	Programmable DC Source	DS10014	1-100Vdc, 0.3-14.4A	MOTECH	2018/5/17	2019/5/17	
	ML-486	Programmable DC Source	DS10014	1-100Vdc, 0.3-14.4A	MOTECH	2018/5/17	2019/5/17	
	ML-487	Programmable DC Source	DS6024	1-60 Vdc, 0.3-24A	MOTECH	2018/5/17	2019/5/17	
V	ML-549	Data Logger	313	15~35 ℃; 30~80 %RH	CENTER	2018/9/18	2019/9/18	
	ML-459	Data Acquisition	MX100-E-1D	1-100 Vdc, -50 to 150℃	Yokogawa	2018/9/12	2019/9/12	
	ML-460	Data Acquisition	MX100-E-1D	1-100 Vdc, -50 to 150℃	Yokogawa	2018/9/12	2019/9/12	
V	ML-918	Overcharge & Forced discharge tester	T901	3~30 Vdc, Charge: 0.05~20A Discharge: 0.02~10A	SMP	2018/5/17	2019/5/17	
T.8 Forced Discharge								
	ML-132	Electronic Load	3311C	60V,55A, 300W	Prodigit	2018/3/1	2019/3/1	
	ML-133	Electronic Load	3311C	60V,55A, 300W	Prodigit	2018/3/1	2019/3/1	
	ML-136	Electronic Load	3311C	60V,55A, 300W	Prodigit	2018/3/1	2019/3/1	
	ML-192	Electronic Load	3311C	60V,55A, 300W	Prodigit	2018/3/1	2019/3/1	
	ML-269	Electronic Load	3311C	60V,55A, 300W	Prodigit	2018/3/1	2019/3/1	
	ML-532	DC Electronic Load	33511-01	120V, 240A, 3600W	Prodigit	2018/7/18	2019/7/18	
	ML-482	Programmable DC Source	DS10014	1-100Vdc, 0.3-14.4A	MOTECH	2018/5/17	2019/5/17	
	ML-483	Programmable DC Source	DS10014	1-100Vdc, 0.3-14.4A	MOTECH	2018/5/17	2019/5/17	
	ML-484	Programmable DC Source	DS10014	1-100Vdc, 0.3-14.4A	MOTECH	2018/5/17	2019/5/17	
	ML-486	Programmable DC Source	DS10014	1-100Vdc, 0.3-14.4A	MOTECH	2018/5/17	2019/5/17	
	ML-487	Programmable DC Source	DS6024	1-60 Vdc, 0.3-24A	MOTECH	2018/5/17	2019/5/17	
V	ML-549	Data Logger	313	15~35 ℃; 30~80 %RH	CENTER	2018/9/18	2019/9/18	
	ML-459	Data Acquisition	MX100-E-1D	1-100 Vdc, -50 to 150℃	Yokogawa	2018/9/12	2019/9/12	
	ML-460	Data Acquisition	MX100-E-1D	1-100 Vdc, -50 to 150℃	Yokogawa	2018/9/12	2019/9/12	
V	ML-918	Overcharge & Forced discharge tester	T901	3~30 Vdc, Charge: 0.05~20A Discharge: 0.02~10A	SMP	2018/5/17	2019/5/17	
Note 1: DC Voltage: 0.1-1000V; AC Voltage: 0.5-700V at 60Hz, 1kHz; Resistance: 10Ω-10MΩ; DC Current: 0.1mA-3A; AC Current: 0.01-3A at 60Hz, 0.01-1A, at 1kHz.								

Form No. : W11-002-B04

本資料為新普科技股份有限公司之智慧財產權，非經本公司書面授權許可，不得透露或使用本資料，亦不得複印、複製或轉變成其它任何形式使用。
 The information contained herein is the exclusive property of SIMPLO TECHNOLOGY CO., LTD, and shall not be distributed, reproduced, or disclosed in whole or in part without prior written permission.

本測試報告僅對上述測試項目有效,本報告分離使用無效
 This test report is valid only to the items, Invalid for separation using.



新普科技股份有限公司
 新世電子(常熟)有限公司
 新普科技(重慶)有限公司
 華普電子(常熟)有限公司

Control Number: SLEU-1810001

6. T.1~T.8 Detail Reports:

UN 38.3 Test Datasheet

UN38.3/ST/SG/AC.10/11/Rev.6

Control Number: SLEU-1810001	Customer: Lenovo	Model Name: L18M6PD3	SMP Project Name: Sideswipe_NEC
Pack P/N: 931QA121H (A)(B)	Configuration: 3S2P	Test Duration: 2018/09/05~2018/10/04	Reviewer: Esmond

Test Sample Identification: Large Battery Small Battery Single-cell Battery

Battery Pack					Component Cell			
Used	Sample No.	Sample State	Used	Sample No.	Sample State	Used	Sample No.	Sample State
V	01~04	1 Cycle, Fully charged	V	05~08	50 Cycles, Fully charged	V	01C~05C	1 Cycle, 50% SOC
V	09~12	1 Cycle, Fully charged	V	13~16	50 Cycles, Fully charged	V	06C~15C	1 Cycle, Fully discharged (0% SOC)
		25Cycles, Fully charged			25 Cycles, Fully charged	V	16C~25C	50 Cycles, Fully discharged (0% SOC)

T.1 Altitude Simulation

Start time: 2018/09/20 09:00	Ambient temp.: 24.2 °C							Operator: Martin	
Finish time: 2018/09/20 16:10	Sample 01	Sample 02	Sample 03	Sample 04	Sample 05	Sample 06	Sample 07	Sample 08	
OCV (V)	Before	12.938	12.933	12.930	12.934	12.933	12.936	12.931	12.933
	After	12.925	12.923	12.917	12.923	12.921	12.925	12.919	12.921
	Residual OCV %	99.90%	99.92%	99.90%	99.91%	99.91%	99.91%	99.91%	99.91%
Mass (g)	Before	223.439	222.581	223.379	221.689	223.428	222.705	223.751	222.466
	After	223.436	222.576	223.379	221.687	223.425	222.701	223.751	222.463
	Mass loss %	0.00%	0.00%	0.00%	0.00%	0.00%	0.00%	0.00%	0.00%
Results	P	P	P	P	P	P	P	P	

T.2 Thermal Test

Start time: 2018/09/20 16:30	Ambient temp.: 23.8 °C							Operator: Martin	
Finish time: 2018/09/27 09:40	Sample 01	Sample 02	Sample 03	Sample 04	Sample 05	Sample 06	Sample 07	Sample 08	
OCV (V)	Before	12.925	12.923	12.917	12.923	12.921	12.925	12.919	12.921
	After	12.738	12.728	12.733	12.731	12.732	12.732	12.732	12.731
	Residual OCV %	98.55%	98.49%	98.58%	98.51%	98.54%	98.51%	98.55%	98.53%
Mass (g)	Before	223.436	222.576	223.379	221.687	223.425	222.701	223.751	222.463
	After	223.412	222.558	223.360	221.666	223.402	222.682	223.731	222.446
	Mass loss %	0.01%	0.01%	0.01%	0.01%	0.01%	0.01%	0.01%	0.01%
Results	P	P	P	P	P	P	P	P	

T.3 Vibration

Start time: 2018/09/27 10:00	Ambient temp.: 24.5 °C							Operator: Martin	
Finish time: 2018/09/28 10:00	Sample 01	Sample 02	Sample 03	Sample 04	Sample 05	Sample 06	Sample 07	Sample 08	
OCV (V)	Before	12.738	12.728	12.733	12.731	12.732	12.732	12.732	12.731
	After	12.721	12.709	12.715	12.714	12.714	12.713	12.715	12.712
	Residual OCV %	99.87%	99.85%	99.86%	99.87%	99.86%	99.85%	99.87%	99.85%
Mass (g)	Before	223.412	222.558	223.360	221.666	223.402	222.682	223.731	222.446
	After	223.412	222.555	223.360	221.663	223.399	222.677	223.725	222.443
	Mass loss %	0.00%	0.00%	0.00%	0.00%	0.00%	0.00%	0.00%	0.00%
Results	P	P	P	P	P	P	P	P	

T.4 Shock

Start time: 2018/09/28 10:20	Ambient temp.: 24.1 °C							Operator: Martin	
Finish time: 2018/09/28 15:10	Sample 01	Sample 02	Sample 03	Sample 04	Sample 05	Sample 06	Sample 07	Sample 08	
OCV (V)	Before	12.721	12.709	12.715	12.714	12.714	12.713	12.715	12.712
	After	12.711	12.700	12.708	12.709	12.706	12.709	12.709	12.704
	Residual OCV %	99.92%	99.93%	99.94%	99.96%	99.94%	99.97%	99.95%	99.94%
Mass (g)	Before	223.412	222.555	223.360	221.663	223.399	222.677	223.725	222.443
	After	223.411	222.555	223.358	221.663	223.396	222.676	223.725	222.441
	Mass loss %	0.00%	0.00%	0.00%	0.00%	0.00%	0.00%	0.00%	0.00%
Results	P	P	P	P	P	P	P	P	

Form No. : W11-002-B04

本資料為新普科技股份有限公司之智慧財產權，非經本公司書面授權許可，不得透露或使用本資料，亦不得複印、複製或轉變成其它任何形式使用。
 The information contained herein is the exclusive property of SIMPLO TECHNOLOGY CO., LTD, and shall not be distributed, reproduced, or disclosed in whole or in part without prior written permission.

本測試報告僅對上述測試項目有效，本報告分離使用無效

This test report is valid only to the items, Invalid for separation using.



新普科技股份有限公司
 新世電子(常熟)有限公司
 新普科技(重慶)有限公司
 華普電子(常熟)有限公司

Control Number: SLEU-1810001

T.5 External Short Circuit

Start time: 2018/10/01 09:30		Ambient temp.: 23.7 °C					Operator: Martin		
Finish time: 2018/10/02 10:00		Sample 01	Sample 02	Sample 03	Sample 04	Sample 05	Sample 06	Sample 07	Sample 08
OCV (V)	Before	12.461	12.450	12.458	12.459	12.456	12.459	12.459	12.454
	After	0.000	0.000	0.000	0.000	0.000	0.000	0.000	0.000
Resistance (<100mΩ)		59.3	56.5	58.8	60.7	57.8	58.3	61.3	60.9
Max Temp. (< 170°C)		57.4	57.6	57.9	57.6	57.8	57.7	57.5	57.7
Results		P	P	P	P	P	P	P	P

T.6 Impact / Crush (Component Cell)

UN38.3/ST/SG/AC.10/11/Rev.6

Impact - Cylindrical cells not less than 18.0 mm in diameter

Crush - Prismatic, pouch, coin/button cells and cylindrical cells less than 18.0 mm in diameter

Start time: 2018/09/20 11:00		Ambient temp.: 23.9 °C				Operator: Martin	
Finish time: 2018/09/21 13:30		Sample 01C	Sample 02C	Sample 03C	Sample 04C	Sample 05C	
Initial OCV (V)		3.782	3.777	3.774	3.783	3.776	
Max Temp. (< 170°C)		23.8	23.6	23.6	23.6	23.7	
Results		P	P	P	P	P	

T.7 Overcharge

Start time: 2018/09/25 09:10		Ambient temp.: 24.2 °C						Operator: Martin	
Finish time: 2018/10/03 10:30		Sample 09	Sample 10	Sample 11	Sample 12	Sample 13	Sample 14	Sample 15	Sample 16
Initial OCV (V)		12.937	12.937	12.927	12.933	12.937	12.933	12.934	12.934
Results		P	P	P	P	P	P	P	P

T.8 Forced Discharge (Component Cell)

Start time: 2018/09/26 10:00		Ambient temp.: 23.5 °C							Operator: Martin	
Finish time: 2018/10/04 10:20		Sample 06C	Sample 07C	Sample 08C	Sample 09C	Sample 10C	Sample 11C	Sample 12C	Sample 13C	
Initial OCV (V)		3.466	3.458	3.463	3.452	3.459	3.468	3.449	3.457	
Results		P	P	P	P	P	P	P	P	
Sample No.		Sample 14C	Sample 15C	Sample 16C	Sample 17C	Sample 18C	Sample 19C	Sample 20C	Sample 21C	
Initial OCV (V)		3.452	3.437	3.441	3.453	3.449	3.453	3.463	3.447	
Results		P	P	P	P	P	P	P	P	
Sample No.		Sample 22C	Sample 23C	Sample 24C	Sample 25C					
Initial OCV (V)		3.462	3.455	3.451	3.459					
Results		P	P	P	P					

7. Test Sample:



Form No. : W11-002-B04

本資料為新普科技股份有限公司之智慧財產權，非經本公司書面授權許可，不得透露或使用本資料，亦不得複印、複製或轉變成其它任何形式使用。
 The information contained herein is the exclusive property of SIMPLO TECHNOLOGY CO., LTD, and shall not be distributed, reproduced, or disclosed in whole or in part without prior written permission.

本測試報告僅對上述測試項目有效，本報告分離使用無效

This test report is valid only to the items, Invalid for separation using.